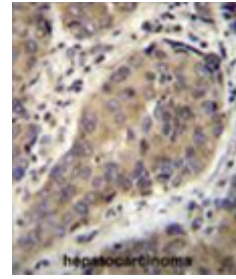


AP54573PU-N**Polyclonal Antibody to WTIP (C-term) - Aff - Purified**

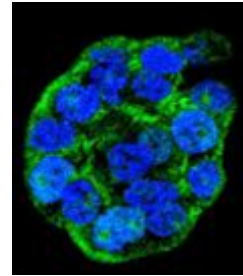
Alternate names:	Wilms tumor protein 1-interacting protein
Quantity:	0.4 ml
Concentration:	lot specific
Background:	WTIP may monitor slit diaphragm protein assembly, a specialized adherens junction characteristic of podocytes. In case of podocyte injury, it shuttles into the nucleus and acts as a transcription regulator that represses WT1-dependent transcription regulation, thereby translating changes in slit diaphragm structure into altered gene expression and a less differentiated phenotype (By similarity).
Uniprot ID:	A6NIX2
NCBI:	9606
GeneID:	126374
Host / Isotype:	Rabbit / Ig
Immunogen:	KLH conjugated synthetic peptide between 474-503 amino acids from the C-terminal region of human WTIP
Format:	State: Liquid Ig fraction Purification: Protein A column followed by peptide affinity purification Buffer System: PBS with 0.09% (W/V) sodium azide
Applications:	ELISA: 1:1;000. Western blot: 1:100~500. Immunohistochemistry on paraffin sections: 1:10~50. Immunofluorescence: 1:10~50. Other applications not tested. Optimal dilutions are dependent on conditions and should be determined by the user.
Specificity:	This antibody detects WTIP (C-term).
Species Reactivity:	Tested: Human
Add. Information:	Molecular Weight: 67454 Da
Storage:	Store at 2 - 8 °C for up to six months or (in aliquots) at -20 °C for longer. Avoid repeated freezing and thawing. Shelf life: one year from despatch.

Pictures:

WTIP Antibody (C-term) (AP54573PU-N) immunohistochemistry analysis in formalin fixed and paraffin embedded human hepatocarcinoma followed by peroxidase conjugation of the secondary antibody and DAB staining. This data demonstrates the use of WTIP Antibody (C-term) for immunohistochemistry. Clinical relevance has not been evaluated.



Confocal immunofluorescent analysis of WTIP Antibody (C-term) (AP54573PU-N) with WiDr cell followed by Alexa Fluor 488-conjugated goat anti-rabbit IgG (green). DAPI was used to stain the cell nuclear (blue).



WTIP Antibody (C-term) (AP54573PU-N) western blot analysis in NCI-H460, WiDr cell line lysates (35 µg/lane). This demonstrates the WTIP antibody detected the WTIP protein (arrow).

