



OriGene Technologies Inc.

9620 Medical Center Drive, Ste 200  
Rockville, MD 20850  
UNITED STATES  
Phone: +1-888-267-4436  
Fax: +1-301-340-8606  
[techsupport@origene.com](mailto:techsupport@origene.com)

AP54562PU-N

OriGene EU

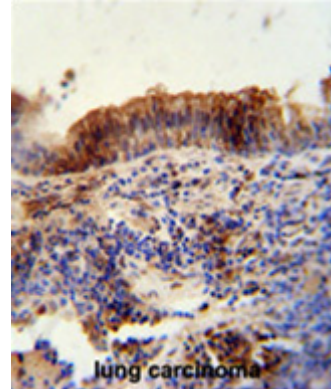
Acris Antibodies GmbH  
Schillerstr. 5  
32052 Herford  
GERMANY  
Phone: +49-5221-34606-0  
Fax: +49-5221-34606-11  
[info@acris-antibodies.com](mailto:info@acris-antibodies.com)

## Polyclonal Antibody to WFDC9 (Center) - Aff - Purified

<b>Alternate names:</b>	WAP9
<b>Catalog No.:</b>	AP54562PU-N
<b>Quantity:</b>	0.4 ml
<b>Concentration:</b>	lot specific
<b>Uniprot ID:</b>	<a href="#">Q8NEX5</a>
<b>NCBI:</b>	<a href="#">NP_671731</a>
<b>GeneID:</b>	<a href="#">259240</a>
<b>Host / Isotype:</b>	Rabbit / Ig
<b>Immunogen:</b>	KLH conjugated synthetic peptide between 19-49 amino acids from the Central region of human WFDC9
<b>Format:</b>	<b>State:</b> Liquid Ig fraction <b>Purification:</b> Protein A column followed by peptide affinity purification <b>Buffer System:</b> PBS with 0.09% (W/V) sodium azide
<b>Applications:</b>	ELISA: 1:1;000. Western blot: 1:100~500. Immunohistochemistry on paraffin sections: 1:50~100. Other applications not tested. Optimal dilutions are dependent on conditions and should be determined by the user.
<b>Specificity:</b>	This antibody detects WFDC9 (Center).
<b>Species Reactivity:</b>	<b>Tested:</b> Human
<b>Add. Information:</b>	<b>Molecular Weight:</b> 10506 Da
<b>Storage:</b>	Store at 2 - 8 °C for up to six months or (in aliquots) at -20 °C for longer. Avoid repeated freezing and thawing. Shelf life: one year from despatch.

Pictures:

WFDC9 antibody (Center) (AP54562PU-N) immunohistochemistry analysis in formalin fixed and paraffin embedded human lung carcinoma followed by peroxidase conjugation of the secondary antibody and DAB staining. This data demonstrates the use of the WFDC9 antibody (Center) for immunohistochemistry. Clinical relevance has not been evaluated.



WFDC9 Antibody (Center) (AP54562PU-N) western blot analysis in 293 cell line lysates (35 µg/lane). This demonstrates the WFDC9 antibody detected the WFDC9 protein (arrow).

