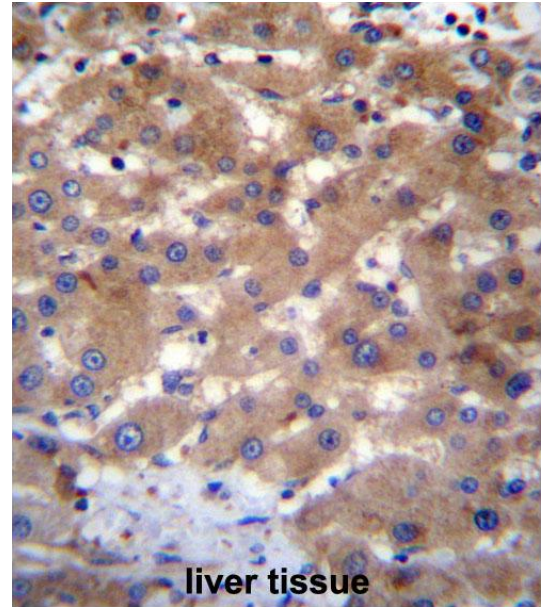


**AP54441PU-N****Polyclonal Antibody to UBE2NL (N-term) - Aff - Purified**

<b>Alternate names:</b>	Putative ubiquitin-conjugating enzyme E2 N-like
<b>Quantity:</b>	0.4 ml
<b>Concentration:</b>	lot specific
<b>Background:</b>	This gene is intronless and encodes a member of the ubiquitin-conjugating enzyme family. The protein product is 91% identical to ubiquitin-conjugating enzyme E2N, a multi-exon gene product.
<b>Uniprot ID:</b>	<a href="#">Q5JXB2</a>
<b>NCBI:</b>	<a href="#">NP_001013007</a>
<b>GeneID:</b>	<a href="#">389898</a>
<b>Host / Isotype:</b>	Rabbit / Ig
<b>Immunogen:</b>	KLH conjugated synthetic peptide between 5-34 amino acids from the N-terminal region of human UBE2NL
<b>Format:</b>	<b>State:</b> Liquid Ig fraction <b>Purification:</b> Protein A column followed by peptide affinity purification <b>Buffer System:</b> PBS with 0.09% (W/V) sodium azide
<b>Applications:</b>	ELISA: 1:1;000. Western blot: 1:100~500. Immunohistochemistry: 1:10~50. Other applications not tested. Optimal dilutions are dependent on conditions and should be determined by the user.
<b>Specificity:</b>	This antibody detects UBE2NL (N-term).
<b>Species Reactivity:</b>	<b>Tested:</b> Human
<b>Add. Information:</b>	<b>Molecular Weight:</b> 17377 Da
<b>Storage:</b>	Store at 2 - 8 °C for up to six months or (in aliquots) at -20 °C for longer. Avoid repeated freezing and thawing. Shelf life: one year from despatch.
<b>General Readings:</b>	1. Ross, M.T., et al. Nature 434(7031):325-337(2005).

**Pictures:**

UBE2NL Antibody (N-term) (AP54441PU-N) immunohistochemistry analysis in formalin fixed and paraffin embedded human liver tissue followed by peroxidase conjugation of the secondary antibody and DAB staining. This data demonstrates the use of UBE2NL Antibody (N-term) for immunohistochemistry. Clinical relevance has not been evaluated.



UBE2NL Antibody (N-term) (AP54441PU-N) western blot analysis in HepG2 cell line lysates (35 µg/lane). This demonstrates the UBE2NL antibody detected the UBE2NL protein (arrow).

