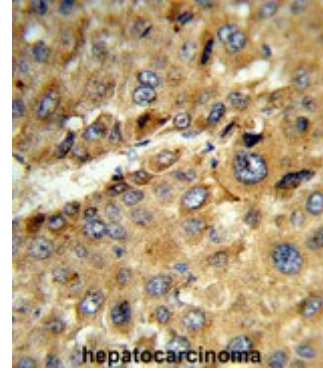


AP54159PU-N**Polyclonal Antibody to TAT (Tyrosine aminotransferase) (Center)
- Aff - Purified**

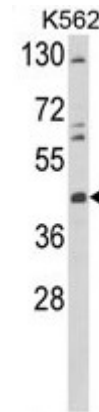
| | |
|----------------------------|---|
| Alternate names: | L-tyrosine:2-oxoglutarate aminotransferase |
| Quantity: | 0.4 ml |
| Concentration: | lot specific |
| Background: | TAT is a mitochondrial protein tyrosine aminotransferase which is present in the liver and catalyzes the conversion of L-tyrosine into p-hydroxyphenylpyruvate. |
| Uniprot ID: | P17735 |
| NCBI: | NP_000344 |
| GeneID: | 6898 |
| Host / Isotype: | Rabbit / Ig |
| Immunogen: | KLH conjugated synthetic peptide between 285~315 amino acids from the Central region of human TAT |
| Format: | State: Liquid purified Ig fraction Purification: Affinity chromatography on Protein A Buffer System: PBS Preservatives: 0.09% (W/V) sodium azide |
| Applications: | ELISA: 1/1000. Western Blot: 1/100 - 1/500. Immunohistochemistry on paraffin sections: 1/50 - 1/100. Flow Cytometry: 1/10 - 1/50. Other applications not tested. Optimal dilutions are dependent on conditions and should be determined by the user. |
| Molecular Weight: | 50399 Da |
| Specificity: | This antibody reacts to TAT. |
| Species Reactivity: | Tested: Human. |
| Storage: | Store the antibody undiluted at 2-8°C for one month or (in aliquots) at -20°C for longer. Avoid repeated freezing and thawing. Shelf life: one year from despatch. |
| General Readings: | 1. Liu, S., et al. Biosci. Rep. 29(2):103-109(2009) 2. Pasternack, S.M., et al. Br. J. Dermatol. 160(3):704-706(2009) 3. Maydan, G., et al. J. Inherit. Metab. Dis. 29(5):620-626(2006) 4. Charfeddine, C., et al. Mol. Genet. Metab. 88(2):184-191(2006) 5. Baharvand, H., et al. Int. J. Dev. Biol. 50(7):645-652(2006) 6. Natt, E., et al. Proc. Natl. Acad. Sci. U.S.A. 89(19):9297-9301(1992) |

Pictures:

Formalin-fixed and paraffin-embedded human hepatocarcinoma reacted with TAT Antibody (Center), which was peroxidase-conjugated to the secondary antibody, followed by DAB staining. This data demonstrates the use of this antibody for immunohistochemistry; clinical relevance has not been evaluated.



Western blot analysis of TAT Antibody (Center) (Cat. #AP54159PU-N) in K562 cell line lysates (35µg/lane). TAT (arrow) was detected using the purified Pab.



TAT Antibody (Center) (Cat. #AP54159PU-N) flow cytometry analysis of K562 cells (bottom histogram) compared to a negative control cell (top histogram). FITC-conjugated goat-anti-rabbit secondary antibodies were used for the analysis.

