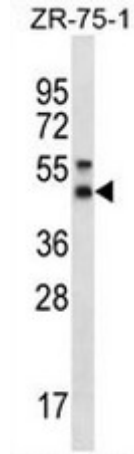


AP54092PU-N**Polyclonal Antibody to Syntaxin 5 / STX5 (Center) - Aff - Purified**

Alternate names:	STX5A, Syntaxin-5
Quantity:	0.4 ml
Concentration:	lot specific
Background:	STX5 mediates endoplasmic reticulum to Golgi transport (By similarity).
Uniprot ID:	Q13190
NCBI:	NP_003155
GeneID:	6811
Host / Isotype:	Rabbit / Ig
Immunogen:	KLH conjugated synthetic peptide between 179-209 amino acids from the Central region of human STX5
Format:	State: Liquid purified Ig fraction Purification: Affinity chromatography on Protein A Buffer System: PBS Preservatives: 0.09% (W/V) sodium azide
Applications:	ELISA: 1/1000. Western Blot: 1/100 - 1/500. Other applications not tested. Optimal dilutions are dependent on conditions and should be determined by the user.
Molecular Weight:	39673 Da
Specificity:	This antibody reacts to STX5.
Species Reactivity:	Tested: Human and Mouse.
Storage:	Store the antibody undiluted at 2-8°C for one month or (in aliquots) at -20°C for longer. Avoid repeated freezing and thawing. Shelf life: one year from despatch.
General Readings:	1. Laufman, O., et al. EMBO J. 28(14):2006-2017(2009) 2. Diao, A., et al. J. Biol. Chem. 283(11):6957-6967(2008) 3. Amessou, M., et al. J. Cell. Sci. 120 (PT 8), 1457-1468 (2007) 4. Wang, A.G., et al. Biochem. Biophys. Res. Commun. 345(3):1022-1032(2006) 5. Suga, K., et al. FEBS Lett. 579(20):4226-4234(2005)

Pictures:

STX5 Antibody (Center) (Cat. #AP54092PU-N) western blot analysis in ZR-75-1 cell line lysates (35µg/lane). This demonstrates the STX5 antibody detected the STX5 protein (arrow).



STX5 Antibody (Center) (Cat. #AP54092PU-N) western blot analysis in mouse bladder tissue lysates (35µg/lane). This demonstrates the STX5 antibody detected the STX5 protein (arrow).

