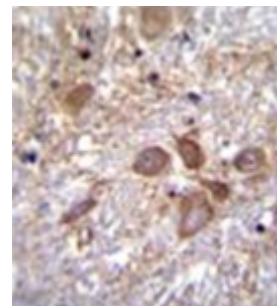
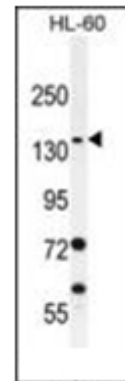


AP54013PU-N**Polyclonal Antibody to SPECC1L (Center) - Aff - Purified**

Alternate names:	CYTSA, Cytospin-A, KIAA0376, NY-REN-22, SPECC1-like protein
Quantity:	0.4 ml
Concentration:	0.48 mg/ml (lot specific)
Uniprot ID:	Q69YQ0
NCBI:	NP_001138940
GeneID:	23384
Host / Isotype:	Rabbit / Ig
Immunogen:	KLH conjugated synthetic peptide between 705-733 amino acids from the central region of Human SPECC1-like protein. Genename: SPECC1L
Format:	State: Liquid purified Ig fraction Purification: Affinity Chromatography on Protein A Buffer System: PBS Preservatives: 0.09% Sodium Azide
Applications:	Western Blot: 1/1000. Flow Cytometry: 1/10-1/50. Immunofluorescence: 1/10-1/50. Immunohistochemistry on Paraffin Sections: 1/10-1/50. Other applications not tested. Optimal dilutions are dependent on conditions and should be determined by the user.
Specificity:	This antibody recognizes Human and Mouse SPECC1L (Center).
Add. Information:	Molecular Weight: 124602 Da
Storage:	Store undiluted at 2-8°C for one month or (in aliquots) at -20°C for longer. Avoid repeated freezing and thawing. Shelf life: one year from despatch.
General Readings:	1. Scanlan, M.J., et al. Int. J. Cancer 83(4):456-464 (1999).
Pictures:	Immunohistochemistry: Formalin fixed, paraffin embedded human brain tissue stained with SPECC1L Antibody (Center) Cat.-No AP54013PU-N followed by peroxidase conjugation of the secondary antibody and DAB staining. Clinical relevance has not been evaluated.



Western blot analysis of SPECC1L Antibody Cat.-No AP54013PU-N (arrow) in HL-60 cell line lysates (35ug/lane).



Flow cytometric analysis of HL-60 cells using SPECC1L Antibody Cat.-No AP54013PU-N (right histogram) compared to a negative control cell (left histogram). FITC-conjugated goat-anti-rabbit secondary antibodies were used for the analysis.

