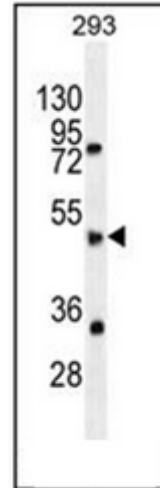


AP54012PU-N**Polyclonal Antibody to SPDYE5 (N-term) - Aff - Purified**

Alternate names:	Putative speedy protein E5
Quantity:	0.4 ml
Concentration:	lot specific
Uniprot ID:	A6NIY4
NCBI:	NP_001092905
GeneID:	442590
Host / Isotype:	Rabbit / Ig
Immunogen:	Immunized with a KLH conjugated synthetic peptide between 21-50 amino acids from the N-terminal region of human SPDYE5
Format:	State: Liquid purified Ig fraction Purification: Affinity Chromatography on Protein A Buffer System: PBS Preservatives: 0.09% Sodium Azide
Applications:	ELISA: 1/1000. Western Blot: 1/100-1/500. Flow Cytometry: 1/10-1/50. Other applications not tested. Optimal dilutions are dependent on conditions and should be determined by the user.
Specificity:	This antibody recognizes Human SPDYE5 (N-term).
Add. Information:	Molecular Weight: 40483 Da
Storage:	Store undiluted at 2-8°C for one month or (in aliquots) at -20°C for longer. Avoid repeated freezing and thawing. Shelf life: one year from despatch.
General Readings:	1. Hillier, L.W., et al. Nature 424(6945):157-164 (2003).

Pictures:

Western blot analysis of SPDYE5 Antibody (N-term) Cat.-No AP54012PU-N in 293 cell line lysates (35ug/lane). This demonstrates the SPDYE5 antibody detected the SPDYE5 protein (arrow).



Flow cytometric analysis of 293 cells using SPDYE5 Antibody (N-term) Cat.-No AP54012PU-N (right histogram) compared to a negative control cell (left histogram). FITC-conjugated goat-anti-rabbit secondary antibodies were used for the analysis.

