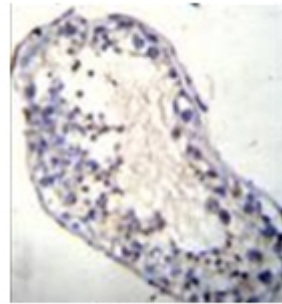


Polyclonal Antibody to SPDYE4 (C-term) - Aff - Purified

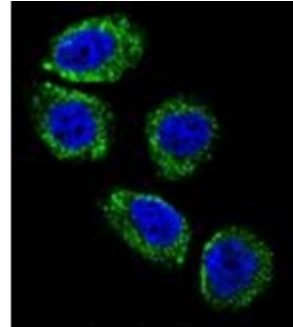
Alternate names:	Speedy protein E4
Catalog No.:	AP54011PU-N
Quantity:	0.4 ml
Concentration:	lot specific
Uniprot ID:	A6NLX3
NCBI:	NP_001121548
GeneID:	388333
Host / Isotype:	Rabbit / Ig
Immunogen:	KLH conjugated synthetic peptide between 178-208 amino acids from the C-terminal region of Human SPDYE4 Genename: SPDYE4
Format:	State: Liquid purified Ig fraction Purification: Affinity Chromatography on Protein A Buffer System: PBS Preservatives: 0.09% Sodium Azide
Applications:	ELISA: 1/1000. Western Blot: 1/100-1/500. Flow Cytometry: 1/10-1/50. Immunofluorescence: 1/10-1/50. Immunohistochemistry on Paraffin Sections: 1/10-1/50. Other applications not tested. Optimal dilutions are dependent on conditions and should be determined by the user.
Specificity:	This antibody recognizes Human SPDYE4 (C-term).
Add. Information:	Molecular Weight: 27806 Da
Storage:	Store undiluted at 2-8°C for one month or (in aliquots) at -20°C for longer. Avoid repeated freezing and thawing. Shelf life: one year from despatch.
General Readings:	1. Strausberg, R.L., et al. Proc. Natl. Acad. Sci. U.S.A. 99(26):16899-16903 (2002).

Pictures:

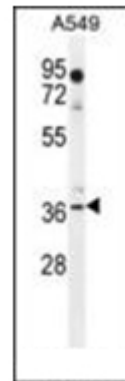
Formalin fixed, paraffin embedded human testis tissue stained with SPDYE4 Antibody (C-term) Cat.-No AP54011PU-N followed by peroxidase conjugation of the secondary antibody and DAB staining. This data demonstrates the use of SPDYE4 Antibody (C-term) for immunohistochemistry. Clinical relevance has not been evaluated.



Confocal immunofluorescent analysis of SPDYE4 Antibody (C-term) Cat.-No AP54011PU-N with A549 cell followed by Alexa Fluor 488-conjugated goat anti-rabbit IgG (green). DAPI was used to stain the cell nuclear (blue).



Western blot analysis of SPDYE4 Antibody (C-term) Cat.-No AP54011PU-N in A549 cell line lysates (35ug/lane). This demonstrates the SPDYE4 antibody detected the SPDYE4 protein (arrow).



Flow cytometric analysis of A549 cells using SPDYE4 Antibody (C-term) Cat.-No AP54011PU-N (right histogram) compared to a negative control cell (left histogram). FITC-conjugated goat-anti-rabbit secondary antibodies were used for the analysis.

