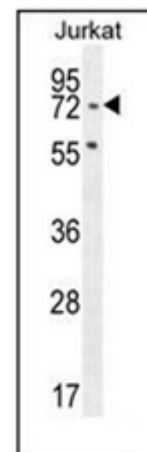


AP53932PU-N**Polyclonal Antibody to SLFN12L (N-term) - Aff - Purified**

Alternate names:	SLFN5, Schlafen family member 12-like
Quantity:	0.4 ml
Concentration:	lot specific
Uniprot ID:	Q6IEE8
NCBI:	NP_001182719
GeneID:	100506736
Host / Isotype:	Rabbit / Ig
Immunogen:	KLH conjugated synthetic peptide between 98-127 amino acids from the N-terminal region of Human SLFN12L Genename: SLFN12L
Format:	State: Liquid purified Ig fraction Purification: Affinity Chromatography on Protein A Buffer System: PBS Preservatives: 0.09% Sodium Azide
Applications:	ELISA: 1/1000. Western Blot: 1/100-1/500. Flow Cytometry: 1/10-1/50. Other applications not tested. Optimal dilutions are dependent on conditions and should be determined by the user.
Specificity:	This antibody recognizes SLFN12L (N-term).
Add. Information:	Molecular Weight: 70568 Da
Storage:	Store undiluted at 2-8°C for one month or (in aliquots) at -20°C for longer. Avoid repeated freezing and thawing. Shelf life: one year from despatch.

Pictures: Western blot analysis of SLFN12L Antibody (N-term) Cat.-No AP53932PU-N in Jurkat cell line lysates (35ug/lane). This demonstrates the SLFN12L antibody detected the SLFN12L protein (arrow).



Flow cytometric analysis of Jurkat cells using SLFN12L Antibody (N-term) Cat.-No AP53932PU-N (right histogram) compared to a negative control cell (left histogram). FITC-conjugated goat-anti-rabbit secondary antibodies were used for the analysis.

