

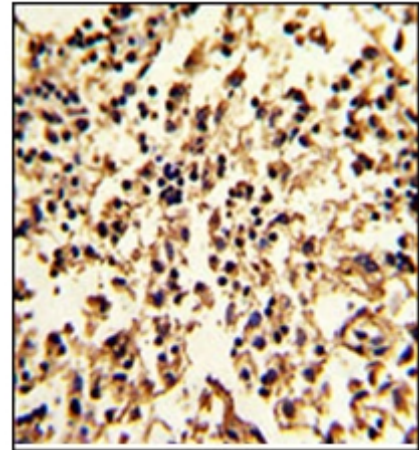
## AP53860PU-N

## Polyclonal Antibody to GCET1 / SERPINA9 (Center) - Aff - Purified

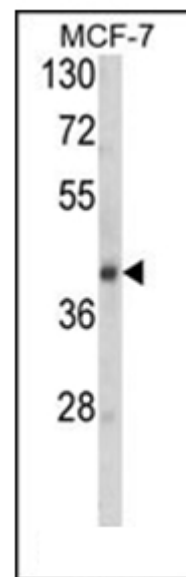
<b>Alternate names:</b>	GCET1, Germinal center B-cell-expressed transcript 1 protein, SERPINA11, Serpin A9, UNQ692/PRO1337
<b>Quantity:</b>	0.4 ml
<b>Concentration:</b>	0.5 mg/ml (lot specific).
<b>Background:</b>	SERPINA9 is a protease inhibitor that inhibits trypsin and trypsin-like serine proteases (in vitro). This protein inhibits plasmin and thrombin with lower efficiency (in vitro).
<b>Uniprot ID:</b>	<a href="#">Q86WD7</a>
<b>NCBI:</b>	<a href="#">NP_001035983</a>
<b>GeneID:</b>	<a href="#">327657</a>
<b>Host / Isotype:</b>	Rabbit / Ig
<b>Immunogen:</b>	KLH conjugated synthetic peptide between 194-222 amino acids from the Central region of Human SERPINA9. <b>Genename:</b> SERPINA9
<b>Format:</b>	<b>State:</b> Liquid purified Ig fraction. <b>Purification:</b> Protein A Chromatography followed by peptide Affinity purification. <b>Buffer System:</b> PBS with 0.09% (W/V) Sodium Azide as preservative.
<b>Applications:</b>	<b>Western blotting:</b> 1/1000. <b>Flow Cytometry:</b> 1/10-1/50. <b>Immunohistochemistry (FFPE tissue):</b> 1/10-1/50. Other applications not tested. Optimal dilutions are dependent on conditions and should be determined by the user.
<b>Specificity:</b>	This antibody recognizes SERPINA9 (Center). <b>Species:</b> Human. Other species not tested.
<b>Storage:</b>	Store the antibody undiluted at 2-8°C for one month or (in aliquots) at -20°C for longer. Avoid repeated freezing and thawing. Shelf life: one year from despatch.
<b>Caution:</b>	This product is for research use only. Not for use in diagnostic or therapeutic procedures.
<b>General Readings:</b>	<ol style="list-style-type: none"> <li>1. Luke, M.M., et al. Stroke 40(2):363-368(2009)</li> <li>2. Paterson, M.A., et al. Am. J. Clin. Pathol. 130(1):117-126(2008)</li> <li>3. Montes-Moreno, S., et al. Blood 111(1):351-358(2008)</li> <li>4. Shiffman, D., et al. Arterioscler. Thromb. Vasc. Biol. 28(1):173-179(2008)</li> <li>5. Morrison, A.C., et al. Cerebrovasc. Dis. 26(4):420-424(2008)</li> <li>6. Tamura M, Takata K, Sato Y, Nakamura N, Kikuti YY, Ichimura K, et al. Germinal center B-cell-like diffuse large B-cell lymphoma of the duodenum is associated with t(14;18) translocation. Pathol Int. 2011 Dec;61(12):742-8. doi: 10.1111/j.1440-1827.2011.02748.x. PubMed PMID: 22126382.</li> </ol>

**Pictures:**

Formalin-Fixed, Paraffin-Embedded Human lymph with SERPINA9 Antibody (Center), which was peroxidase-conjugated to the secondary antibody, followed by DAB staining. This data demonstrates the use of this antibody for Immunohistochemistry. Clinical relevance has not been evaluated.



Western blot analysis of SERPINA9 Antibody (Center) Cat.-No. AP53860PU-N in MCF-7 cell line lysates (35 µg/lane). SERPINA9 (arrow) was detected using the purified Pab.



Flow Cytometric analysis of MDA-231 cells using SERPINA9 Antibody (Center)(bottom Histogram) compared to a Negative Control cell (top Histogram). FITC-conjugated Goat-anti-Rabbit secondary antibodies were used for the analysis.

