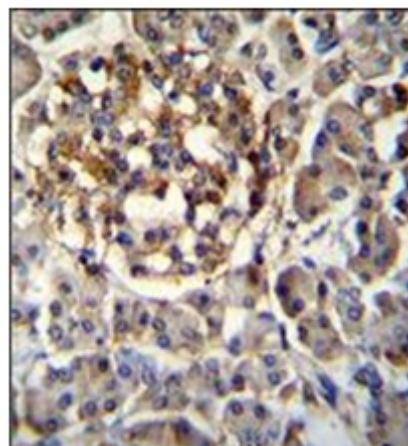


AP53832PU-N**Polyclonal Antibody to SEC14L5 (Center) - Aff - Purified**

Alternate names:	KIAA0420, SEC14-like protein 5
Quantity:	0.4 ml
Concentration:	lot specific
Background:	The specific function of the protein remains unknown.
Uniprot ID:	Q43304
NCBI:	NP_055507
GeneID:	9717
Host / Isotype:	Rabbit / Ig
Immunogen:	KLH conjugated synthetic peptide between 455-485 amino acids from the Central region of Human SEC14L5 Genename: SEC14L5
Format:	State: Liquid purified Ig fraction Purification: Protein A column followed by peptide Affinity purification Buffer System: PBS with 0.09% (W/V) Sodium Azide as preservative
Applications:	ELISA: 1/1,000. Western blotting: 1/100-1/500. Immunohistochemistry: 1/10-1/50. Other applications not tested. Optimal dilutions are dependent on conditions and should be determined by the user.
Specificity:	Recognizes SEC14L5 (Center). Species: Human. Other species not tested.
Add. Information:	Molecular Weight: 78942 Da
Storage:	Store the antibody undiluted at 2-8°C for one month or (in aliquots) at -20°C for longer. Avoid repeated freezing and thawing. Shelf life: one year from despatch.
Caution:	This product is for research use only. Not for use in diagnostic or therapeutic procedures.
General Readings:	1. Ishikawa, K., et al. DNA Res. 4(5):307-313(1997)

Pictures:

Immunohistochemistry analysis in Formalin Fixed, Paraffin Embedded Human pancreas tissue stained with SEC14L5 antibody (Center) Cat.-No AP53832PU-N followed by peroxidase conjugation of the secondary antibody and DAB staining. This data demonstrates the use of SEC14L5 Antibody (Center) for immunohistochemistry. Clinical relevance has not been evaluated.



Western blot analysis of SEC14L5 Antibody (Center) Cat.-No AP53832PU-N in K562, NCI-H460, ZR-75-1, 293, MDA-MB231 cell line lysates (35ug/lane). This demonstrates the SEC14L5 antibody detected the SEC14L5 protein (arrow).

