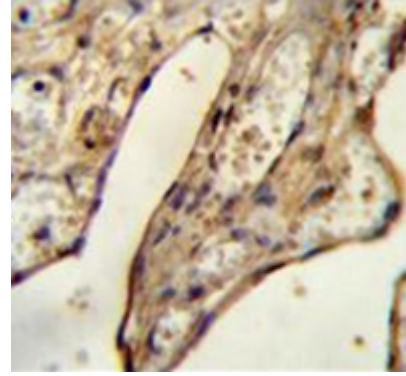


## Polyclonal Antibody to PSORS1C1 (N-term) - Aff - Purified

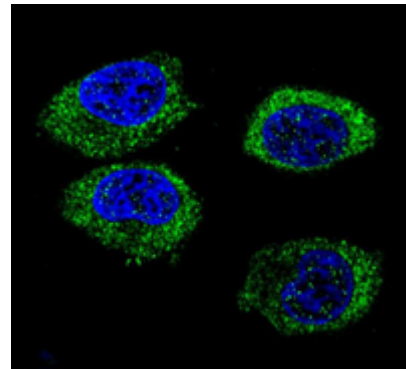
<b>Alternate names:</b>	C6orf16, Psoriasis susceptibility 1 candidate gene 1 protein, SEEK1
<b>Catalog No.:</b>	AP53489PU-N
<b>Quantity:</b>	0.4 ml
<b>Concentration:</b>	lot specific
<b>Uniprot ID:</b>	<a href="#">Q9UIG5</a>
<b>NCBI:</b>	<a href="#">NP_054787</a>
<b>GeneID:</b>	<a href="#">170679</a>
<b>Host / Isotype:</b>	Rabbit / Ig
<b>Immunogen:</b>	Synthetic peptide - KLH conjugated - corresponding to the N-terminal region (between 26-55aa) of human PSORS1C1.
<b>Format:</b>	<b>State:</b> Liquid purified Ig fraction <b>Purification:</b> Purified through a Protein A column followed by peptide affinity purification <b>Buffer System:</b> PBS with 0.09% (W/V) Sodium azide
<b>Applications:</b>	<b>Flow cytometry:</b> 1/10-1/50. <b>Immunofluorescence:</b> 1/10-1/50. <b>Immunohistochemistry on Paraffin sections:</b> 1/50-1/100. <b>Western blot:</b> 1/100-1/500. Enzyme immunoassay: 1/1000. Other applications not tested. Optimal dilutions are dependent on conditions and should be determined by the user.
<b>Specificity:</b>	This antibody recognizes PSORS1C1 at N-term.
<b>Species Reactivity:</b>	<b>Tested:</b> Human
<b>Add. Information:</b>	<b>Molecular Weight:</b> 16580 Da
<b>Storage:</b>	Store undiluted at 2-8°C for one month or (in aliquots) at -20°C for longer. Avoid repeated freezing and thawing. Shelf life: one year from despatch.
<b>General Readings:</b>	Kamatani, Y., et al. Nat. Genet. 42(3): 210-215 (2010) Fellay, J., et al. PLoS Genet. 5 (12): E1000791 (2009) Barcellos, L.F., et al. PLoS Genet. 5 (10): E1000696 (2009) Limou, S., et al. J. Infect. Dis. 199(3): 419-426 (2009) Kim, J.J., et al. Hum. Immunol. 69(12): 867-871 (2008)

**Pictures:**

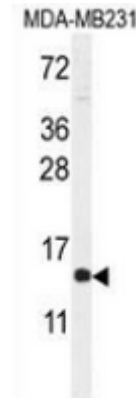
Immunohistochemistry analysis human placenta tissue (Formalin-fixed, Paraffin-embedded) using PSORS1C1 antibody Cat.-No. AP53489PU-N (N-term), followed by peroxidase conjugated secondary antibody and DAB staining. This data demonstrates the use of the PSORS1C1 antibody for IHC. Clinical relevance has not been evaluated.



Confocal immunofluorescent analysis with MDA-MB231 cells using of PSORS1C1 antibody Cat.-No. AP53489PU-N (N-term), followed by Alexa Fluor® 488-conjugated goat anti-rabbit IgG (green). DAPI was used to stain the cell nuclear (blue).



Western blot analysis in MDA-MB231 cell line lysates (35ug/lane) using PSORS1C1 antibody Cat.-No. AP53489PU-N (N-term). This demonstrates the PSORS1C1 antibody detected the PSORS1C1 protein (arrow).



Flow cytometric analysis of MDA-MB231 cells (right histogram) compared to a negative control cell (left histogram) using PSORS1C1 antibody Cat.-No. AP53489PU-N (N-term), followed by FITC-conjugated goat-anti-rabbit secondary antibodies.

