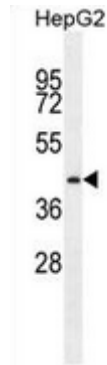


AP53463PU-N**Polyclonal Antibody to PRRT1 (Center) - Aff - Purified**

Alternate names:	C6orf31, NG5, Proline-rich transmembrane protein 1
Quantity:	0.4 ml
Concentration:	0.32 mg/mL
Uniprot ID:	Q99946
NCBI:	NP_085154
GeneID:	80863
Host / Isotype:	Rabbit / Ig
Immunogen:	Synthetic peptide - KLH conjugated - corresponding to the central region (between 247-277aa) of human PRRT1.
Format:	State: Liquid purified Ig fraction Purification: Purified through a protein A column; followed by peptide affinity purification. Buffer System: PBS with 0.09% (W/V) Sodium Azide.
Applications:	This antibody is suitable for flow cytometry and Western blotting. The suggested dilution is: Flow cytometry: 1/10-1/50. Western blotting: 1/100-1/500. Other applications not tested. Optimal dilutions are dependent on conditions and should be determined by the user.
Specificity:	This antibody detects human PRRT1.
Species Reactivity:	Tested: Human
Add. Information:	Molecular Weight: 31430 Da
Storage:	Store the antibody undiluted at 2-8°C for one month or (in aliquots) at -20°C for longer. Avoid repeated freezing and thawing. Shelf life: one year from despatch.
General Readings:	Barcellos, L.F., et al. PLoS Genet. 5 (10), E1000696 (2009) McKinnon, E., et al. Diabetes Obes Metab 11 SUPPL 1, 92-100 (2009) Vignal, C., et al. Arthritis Rheum. 60(1):53-62 (2009) Xie, T., et al. Genome Res. 13(12):2621-2636 (2003)

Pictures:

Western blot analysis in HepG2 cell line lysates (35ug/lane) using PRRT1 antibody Cat.-No. AP53463PU-N. This demonstrates the PRRT1 antibody detected the PRRT1 protein (arrow).



Flow cytometric analysis of HepG2 cells (right histogram) compared to a negative control cell (left histogram) using PRRT1 antibody Cat.-No. AP53463PU-N, followed by FITC-conjugated goat-anti-rabbit secondary antibodies.

