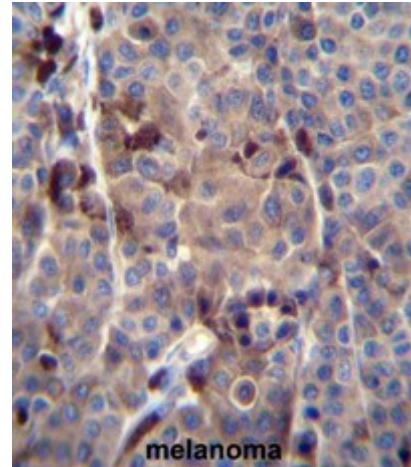


AP53436PU-N**Polyclonal Antibody to PRAMEF8 (C-term) - Aff - Purified**

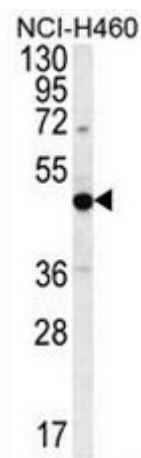
Alternate names:	PRAME family member 8
Quantity:	0.4 ml
Concentration:	lot specific
Uniprot ID:	Q5VWM4
NCBI:	NP_001012276
GeneID:	391002
Host / Isotype:	Rabbit / Ig
Immunogen:	KLH conjugated synthetic peptide between 417-447 amino acids from the C-terminal region of human PRAMEF8
Format:	State: Liquid purified Ig fraction Purification: Affinity chromatography on Protein A Buffer System: PBS Preservatives: 0.09% (W/V) sodium azide
Applications:	ELISA: 1/1000. Western Blot: 1/100 - 1/500. Immunohistochemistry on paraffin sections: 1/10 - 1/50. Flow Cytometry: 1/10 - 1/50. Other applications not tested. Optimal dilutions are dependent on conditions and should be determined by the user.
Molecular Weight:	53669 Da
Specificity:	This antibody reacts to PRAMEF8.
Species Reactivity:	Tested: Human.
Storage:	Store the antibody undiluted at 2-8°C for one month or (in aliquots) at -20°C for longer. Avoid repeated freezing and thawing. Shelf life: one year from despatch.
General Readings:	Gregory, S.G., et al. Nature 441(7091):315-321(2006)

Pictures:

PRAMEF8 Antibody (C-term) (Cat. #AP53436PU-N) immunohistochemistry analysis in formalin fixed and paraffin embedded human melanoma tissue followed by peroxidase conjugation of the secondary antibody and DAB staining. This data demonstrates the use of PRAMEF8 Antibody (C-term) for immunohistochemistry. Clinical relevance has not been evaluated.



PRAMEF8 Antibody (C-term) (Cat. #AP53436PU-N) western blot analysis in NCI-H460 cell line lysates (35µg/lane). This demonstrates the PRAMEF8 antibody detected the PRAMEF8 protein (arrow).



PRAMEF8 Antibody (C-term) (Cat. #AP53436PU-N) flow cytometric analysis of NCI-H460 cells (right histogram) compared to a negative control cell (left histogram). FITC-conjugated goat-anti-rabbit secondary antibodies were used for the analysis.

