

AP53421PU-N**Polyclonal Antibody to PPP3CC / CALNA3 (N-term) - Aff - Purified****Alternate names:**

CAM-PRP catalytic subunit, CNA3, Calcineurin testis-specific catalytic subunit, Calmodulin-dependent calcineurin A subunit gamma isoform, Serine/threonine-protein phosphatase 2B catalytic subunit gamma isoform, protein phosphatase 2B catalytic subunit gamma

Quantity:

0.4 ml

Concentration:

lot specific

Background:

Calmodulin-dependent protein phosphatase, calcineurin, is involved in a wide range of biologic activities, acting as a Ca(2+)-dependent modifier of phosphorylation status. In testis, the motility of the sperm is thought to be controlled by cAMP-dependent phosphorylation and a unique form of calcineurin appears to be associated with the flagellum. The calcineurin holoenzyme is composed of catalytic and regulatory subunits of 60 and 18 kD, respectively. At least 3 genes, calcineurin A-alpha (CALNA1; MIM 114105), calcineurin A-beta (CALNA2; MIM 114106), and calcineurin A-gamma (CALNA3), have been cloned for the catalytic subunit. These genes have been identified in humans, mice, and rats, and are highly conserved between species (90 to 95% amino acid identity).

Uniprot ID:[P48454](#)**NCBI:**[NP_005596](#)**GenID:**[5533](#)**Host / Isotype:**

Rabbit / Ig

Immunogen:

KLH conjugated synthetic peptide between 17-45 amino acids from the N-terminal region of Human PPP3CC

Format:**State:** Liquid purified Ig fraction**Purification:** Protein A column, followed by peptide affinity purification**Buffer System:** PBS containing 0.09% (W/V) Sodium Azide as preservative**Applications:****ELISA:** 1/1000.**Western Blot:** 1/100-1/500.**Immunohistochemistry on Paraffin Sections:** 1/10-1/50.

Other applications not tested. Optimal dilutions are dependent on conditions and should be determined by the user.

Specificity:

This antibody recognizes Human PPP3CC / CALNA3 (N-term).

Add. Information:**Molecular Weight:** 58129 Da**Storage:**

Store undiluted at 2-8°C for one month or (in aliquots) at -20°C for longer.

Avoid repeated freezing and thawing.

Shelf life: one year from despatch.

General Readings:

Liu, Y.J., et al. Obesity (Silver Spring) 18(12):2339-2346(2010)

He, Z.H., et al. Eur. J. Appl. Physiol. 110(4):761-767(2010)

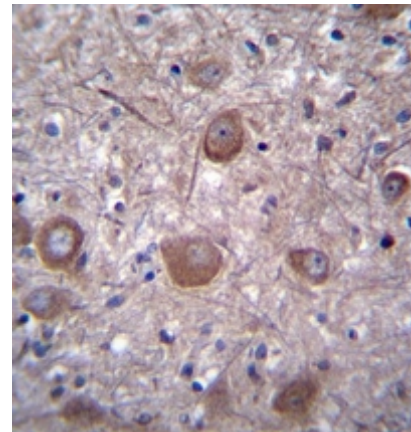
Saus, E., et al. J Psychiatr Res 44(14):971-978(2010)

Kyogoku, C., et al. Psychiatry Res (2010) In press.

Pictures:

Pelak, K., et al. J. Infect. Dis. 201(8):1141-1149(2010)

Immunohistochemistry analysis in formalin fixed and paraffin embedded human brain tissue reacted with PPP3CC / CALNA3 Antibody (N-term) Cat.-No AP53421PU-N followed by peroxidase conjugation of the secondary antibody and DAB staining.



Western blot analysis of PPP3CC / CALNA3 Antibody (N-term) Cat.-No AP53421PU-N in MDA-MB435 cell line lysates (35ug/lane). This demonstrates the PPP3CC antibody detected the PPP3CC protein (arrow).

