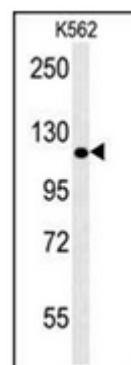


AP53395PU-N

Polyclonal Antibody to POTEE (Center) - Aff - Purified

Alternate names:	A26C1A, POTE2
Quantity:	0.4 ml
Concentration:	0.44 mg/ml (Lot specific)
Uniprot ID:	Q6S8I3
NCBI:	NP_001077007
GeneID:	445582
Host / Isotype:	Rabbit / Ig
Immunogen:	KLH conjugated synthetic peptide between 380-409 amino acids from the Central region of Human POTEE
Format:	State: Liquid purified Ig fraction Purification: Protein A column, followed by peptide affinity purification Buffer System: PBS containing 0.09% (W/V) Sodium Azide as preservative
Applications:	Peptide ELISA: 1/1000. Western Blot: 1/1000. Flow Cytometry: 1/10-1/50. Other applications not tested. Optimal dilutions are dependent on conditions and should be determined by the user.
Specificity:	This antibody recognizes Human POTEE (Center).
Add. Information:	Molecular Weight: 121363 Da
Storage:	Store undiluted at 2-8°C for one month or (in aliquots) at -20°C for longer. Avoid repeated freezing and thawing. Shelf life: one year from despatch.
Pictures:	Western blot analysis of POTEE Antibody (Center) Cat.-No AP53395PU-N in K562 cell line lysates (35ug/lane). This demonstrates the POTEE antibody detected the POTEE protein (arrow).



Flow cytometric analysis of K562 cells using POTEE Antibody (Center) Cat.-No AP53395PU-N (right histogram) compared to a negative control cell (left histogram). FITC-conjugated goat-anti-rabbit secondary antibodies were used for the analysis.

