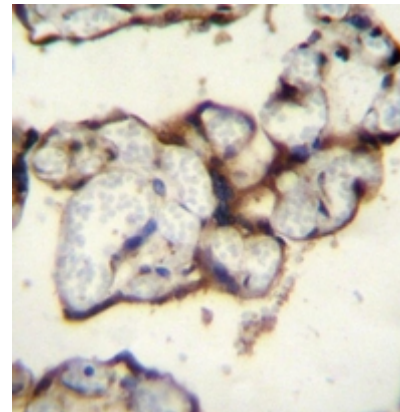


**AP53340PU-N****Polyclonal Antibody to PLCXD2 (Center) - Aff - Purified**

<b>Alternate names:</b>	PI-PLC X domain-containing protein 2
<b>Quantity:</b>	0.4 ml
<b>Concentration:</b>	lot specific
<b>Uniprot ID:</b>	<a href="#">Q0VAA5</a>
<b>NCBI:</b>	<a href="#">NP_001172035</a>
<b>GeneID:</b>	<a href="#">257068</a>
<b>Host / Isotype:</b>	Rabbit / Ig
<b>Immunogen:</b>	KLH conjugated synthetic peptide between 98-127 amino acids from the Central region of human PLCXD2
<b>Format:</b>	<b>State:</b> Liquid purified Ig fraction <b>Purification:</b> Protein A column, followed by peptide affinity purification <b>Buffer System:</b> PBS containing 0.09% (W/V) Sodium Azide as preservative
<b>Applications:</b>	<b>ELISA:</b> 1/1000. <b>Western Blot:</b> 150-1/100. <b>Immunohistochemistry on Paraffin Sections:</b> 1/10-1/50. Other applications not tested. Optimal dilutions are dependent on conditions and should be determined by the user.
<b>Specificity:</b>	This antibody recognizes Human PLCXD2 (C-term).
<b>Add. Information:</b>	<b>Molecular Weight:</b> 34777 Da
<b>Storage:</b>	Store undiluted at 2-8°C for one month or (in aliquots) at -20°C for longer. Avoid repeated freezing and thawing. Shelf life: one year from despatch.
<b>General Readings:</b>	Shimada, M., et al. Hum. Genet. 128(4):433-441(2010) Rose, J.E., et al. Mol. Med. 16 (7-8), 247-253 (2010) Cirulli, E.T., et al. Eur. J. Hum. Genet. 18(7):815-820(2010)
<b>Pictures:</b>	Immunohistochemistry analysis in formalin fixed and paraffin embedded human placenta tissue reacted with AP53340PU-N, which was peroxidase conjugated to the secondary antibody and followed by DAB staining. This data demonstrates the use of PLCXD2 Antibody (Center) for immunohistochemistry. Clinical relevance has not been evaluated.



Western blot analysis of PLCXD2 Antibody (Center) Cat.-No AP53340PU-N in K562 cell line lysates (35ug/lane). This demonstrates the PLCXD2 antibody detected the PLCXD2 protein (arrow).

