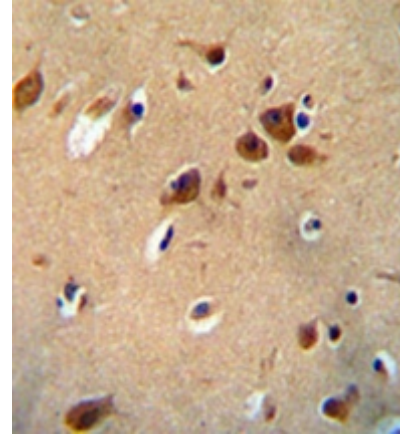


**AP53316PU-N****Polyclonal Antibody to PKHG1 (C-term) - Aff - Purified**

<b>Alternate names:</b>	KIAA1209, PLEKHG1, Pleckstrin homology domain-containing family G member 1
<b>Quantity:</b>	0.4 ml
<b>Concentration:</b>	lot specific
<b>Uniprot ID:</b>	<a href="#">Q9ULL1</a>
<b>NCBI:</b>	<a href="#">NP_001025055</a>
<b>GeneID:</b>	<a href="#">57480</a>
<b>Host / Isotype:</b>	Rabbit / Ig
<b>Immunogen:</b>	KLH conjugated synthetic peptide between 1276-1306 amino acids from the C-terminal region of human PKHG1
<b>Format:</b>	<b>State:</b> Liquid purified Ig fraction <b>Purification:</b> Protein A column, followed by peptide affinity purification <b>Buffer System:</b> PBS containing 0.09% (W/V) Sodium Azide as preservative
<b>Applications:</b>	<b>ELISA:</b> 1/1000. <b>Western Blot:</b> 1/100-1/500. <b>Immunohistochemistry on Paraffin Sections:</b> 1/50-1/100. Other applications not tested. Optimal dilutions are dependent on conditions and should be determined by the user.
<b>Specificity:</b>	This antibody recognizes Human PKHG1 (C-term).
<b>Add. Information:</b>	<b>Molecular Weight:</b> 155439 Da
<b>Storage:</b>	Store undiluted at 2-8°C for one month or (in aliquots) at -20°C for longer. Avoid repeated freezing and thawing. Shelf life: one year from despatch.
<b>General Readings:</b>	Lei, S.F., et al. J. Bone Miner. Res. (2010) In press Rose, J.E., et al. Mol. Med. 16 (7-8), 247-253 (2010) Otowa, T., et al. J. Hum. Genet. 54(2):122-126(2009) Matsuoka, S., et al. Science 316(5828):1160-1166(2007) Olsen, J.V., et al. Cell 127(3):635-648(2006)

**Pictures:**

Immunohistochemistry analysis in formalin fixed and paraffin embedded human brain tissue reacted with PKHG1 Antibody (C-term) Cat.-No AP53316PU-N, which was peroxidase conjugated to the secondary antibody and followed by DAB staining. This data demonstrates the use of the PKHG1 Antibody (C-term) for immunohistochemistry. Clinical relevance has not been evaluated



Western blot analysis of PKHG1 Antibody (C-term) Cat.-No AP53316PU-N in 293 cell line lysates (35ug/lane). This demonstrates the PKHG1 antibody detected the PKHG1 protein (arrow).

