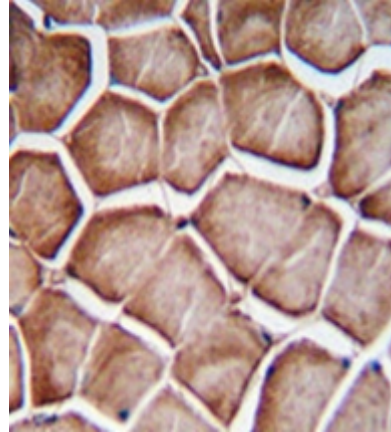


## Polyclonal Antibody to PDDC1 (Center) - Aff - Purified

<b>Alternate names:</b>	Parkinson disease 7 domain-containing protein 1
<b>Catalog No.:</b>	AP53231PU-N
<b>Quantity:</b>	0.1 mg
<b>Concentration:</b>	0.25 mg/ml
<b>Uniprot ID:</b>	<a href="#">Q8NB37</a>
<b>NCBI:</b>	<a href="#">NP_872418</a>
<b>GeneID:</b>	<a href="#">347862</a>
<b>Host / Isotype:</b>	Rabbit / Ig
<b>Immunogen:</b>	KLH conjugated synthetic peptide between 100-130 amino acids from the Central region of human PDDC1
<b>Format:</b>	<b>State:</b> Liquid purified Ig fraction <b>Purification:</b> Protein A column, followed by peptide affinity purification <b>Buffer System:</b> PBS containing 0.09% (W/V) Sodium Azide as preservative
<b>Applications:</b>	<b>ELISA:</b> 1/1000. <b>Western Blot:</b> 1/100-1/500. <b>Immunohistochemistry on Paraffin Sections:</b> 1/50-1/100. Other applications not tested. Optimal dilutions are dependent on conditions and should be determined by the user.
<b>Specificity:</b>	This antibody recognizes Human and Mouse PDDC1 (Center).
<b>Add. Information:</b>	<b>Molecular Weight:</b> 23298 Da
<b>Storage:</b>	Store undiluted at 2-8°C for one month or (in aliquots) at -20°C for longer. Avoid repeated freezing and thawing. Shelf life: one year from despatch.
<b>General Readings:</b>	Kimura, K., et al. Genome Res. 16(1):55-65(2006)

**Pictures:**

Immunohistochemistry analysis in formalin fixed and paraffin embedded human skeletal muscle reacted with PDDC1 Antibody (Center) Cat.-No AP53231PU-N followed by peroxidase conjugation of the secondary antibody and DAB staining.



Western blot analysis of PDDC1 Antibody (Center) Cat.-No AP53231PU-N in mouse Neuro-2a cell line lysates (35ug/lane). This demonstrates the PDDC1 antibody detected the PDDC1 protein (arrow).

