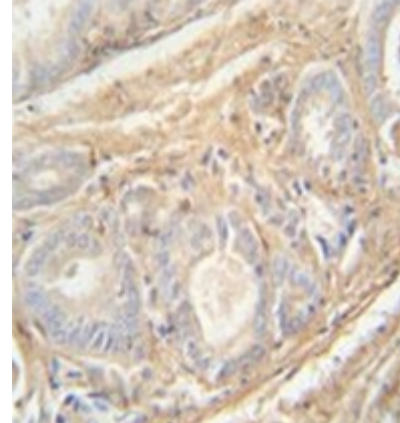


**AP53220PU-N****Polyclonal Antibody to PCOTH (Center) - Aff - Purified**

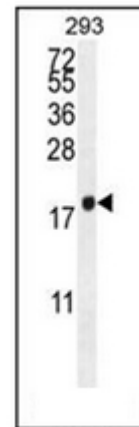
<b>Alternate names:</b>	Protein
<b>Quantity:</b>	0.4 ml
<b>Concentration:</b>	lot specific
<b>Background:</b>	May be involved in growth and survival of prostate cancer cells through the TAF-1beta pathway
<b>Uniprot ID:</b>	<a href="#">Q58A44</a>
<b>NCBI:</b>	<a href="#">NP_001014442</a>
<b>GeneID:</b>	<a href="#">542767</a>
<b>Host / Isotype:</b>	Rabbit / Ig
<b>Immunogen:</b>	KLH conjugated synthetic peptide between 21-50 amino acids from the Central region of Human PCOTH
<b>Format:</b>	<b>State:</b> Liquid purified Ig fraction <b>Purification:</b> Protein A column, followed by peptide affinity purification <b>Buffer System:</b> PBS containing 0.09% (W/V) Sodium Azide as preservative
<b>Applications:</b>	<b>ELISA:</b> 1/1000. <b>Western Blot:</b> 1/100-1/500. <b>Flow Cytometry:</b> 1/10-1/50. <b>Immunohistochemistry on Paraffin Sections:</b> 1/50-1/100. Other applications not tested. Optimal dilutions are dependent on conditions and should be determined by the user.
<b>Specificity:</b>	This antibody recognizes Human PCOTH (Center).
<b>Add. Information:</b>	<b>Molecular Weight:</b> 10968 Da
<b>Storage:</b>	Store undiluted at 2-8°C for one month or (in aliquots) at -20°C for longer. Avoid repeated freezing and thawing. Shelf life: one year from despatch.
<b>General Readings:</b>	1. Anazawa, Y., et al. Cancer Res. 65(1):4578-4586(2005)

**Pictures:**

Immunohistochemistry analysis in formalin fixed and paraffin embedded human prostate carcinoma reacted with PCOTH Antibody (Center) Cat.-No AP53220PU-N followed by peroxidase conjugation of the secondary antibody and DAB staining.



Western blot analysis of PCOTH Antibody (Center) Cat.-No AP53220PU-N in 293 cell line lysates (35ug/lane). This demonstrates the PCOTH antibody detected the PCOTH protein (arrow).



Flow cytometric analysis of 293 cells using PCOTH Antibody (Center) Cat.-No AP53220PU-N (right histogram) compared to a negative control cell (left histogram). FITC-conjugated goat-anti-rabbit secondary antibodies were used for the analysis.

