

**AP53194PU-N****Polyclonal Antibody to PCDH17 (C-term) - Aff - Purified****Alternate names:**

PCDH68, PCH68, Protocadherin 17, Protocadherin 68, Protocadherin-17, Protocadherin-68

**Quantity:**

0.4 ml

**Concentration:**

lot specific

**Background:**

This gene belongs to the protocadherin gene family, a subfamily of the cadherin superfamily. The encoded protein contains six extracellular cadherin domains, a transmembrane domain, and a cytoplasmic tail differing from those of the classical cadherins. The encoded protein may play a role in the establishment and function of specific cell-cell connections in the brain.

**Uniprot ID:**[O14917](#)**NCBI:**[NP\\_001035519](#)**GeneID:**[27253](#)**Host / Isotype:**

Rabbit / Ig

**Immunogen:**

KLH conjugated synthetic peptide between 1107 - 1136 amino acids from the C-terminal region of human PCDH17

**Format:****State:** Liquid purified Ig fraction**Purification:** Chromatography on Protein A followed by peptide affinity purification.**Buffer System:** PBS**Preservatives:** 0.09% (W/V) sodium azide**Applications:****Western Blot:** 1/1000.**Flow Cytometry:** 1/10 - 1/50.

Other applications not tested. Optimal dilutions are dependent on conditions and should be determined by the user.

**Molecular Weight:**

126229 Da

**Specificity:**

This antibody reacts to PCDH17.

**Species Reactivity:****Tested:** Human.**Storage:**

Store the antibody undiluted at 2-8°C for one month or (in aliquots) at -20°C for longer.

Avoid repeated freezing and thawing.

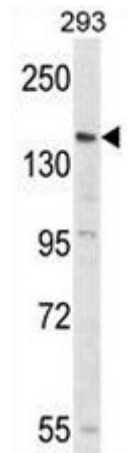
Shelf life: one year from despatch.

**General Readings:**

1. Biswas, S., et al. Dev. Genes Evol. 219(5):265-271(2009)
2. Charles, C.A., et al. J. Am. Acad. Dermatol. 59(5):758-771(2008)
3. Sherwin, J.R., et al. Hum. Reprod. 23(5):1063-1068(2008)
4. Abrahams, B.S., et al. Proc. Natl. Acad. Sci. U.S.A. 104(45):17849-17854(2007)
5. Gottlieb, D.J., et al. BMC Med. Genet. 8 SUPPL 1, S9 (2007)

**Pictures:**

Western blot analysis of PCDH17 Antibody (C-term) (Cat. #AP53194PU-N) in 293 cell line lysates (35µg/lane). PCDH17 (arrow) was detected using the purified Pab.



PCDH17 Antibody (C-term) (Cat. #AP53194PU-N) flow cytometric analysis of 293 cells (right histogram) compared to a negative control cell (left histogram). FITC-conjugated goat-anti-rabbit secondary antibodies were used for the analysis.

