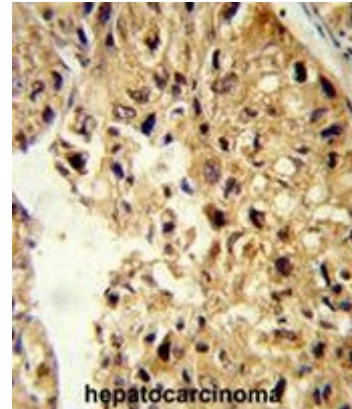


AP53190PU-N**Polyclonal Antibody to PCBD1 (Center) - Aff - Purified**

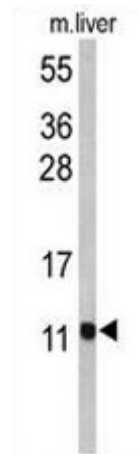
Alternate names:	DCOH, Dimerization cofactor of HNF1, PCBD, PHS, Phenylalanine hydroxylase-stimulating protein, Pterin carbinolamine dehydratase, Pterin-4-alpha-carbinolamine dehydratase
Quantity:	0.4 ml
Concentration:	lot specific
Background:	PCBD1 encodes pterin-4 alpha-carbinolamine dehydratase, an enzyme involved in phenylalanine hydroxylation. A deficiency of this enzyme leads to hyperphenylalaninemia. The enzyme regulates the homodimerization of the transcription factor hepatocyte nuclear factor 1 (HNF1).
Uniprot ID:	P61457
NCBI:	NP_000272
GeneID:	5092
Host / Isotype:	Rabbit / Ig
Immunogen:	KLH conjugated synthetic peptide between 27~56 amino acids from the Center region of human PCBD1
Format:	State: Liquid purified Ig fraction Purification: Affinity chromatography on Protein A Buffer System: PBS Preservatives: 0.09% (W/V) sodium azide
Applications:	ELISA: 1/1000. Western Blot: 1/100 - 1/500. Immunohistochemistry on paraffin sections: 1/50 - 1/100. Flow Cytometry: 1/10 - 1/50. Other applications not tested. Optimal dilutions are dependent on conditions and should be determined by the user.
Molecular Weight:	12000 Da
Specificity:	This antibody reacts to PCBD1.
Species Reactivity:	Tested: Human and Mouse.
Storage:	Store the antibody undiluted at 2-8°C for one month or (in aliquots) at -20°C for longer. Avoid repeated freezing and thawing. Shelf life: one year from despatch.
General Readings:	1. Schnetz-Boutaud, N.C., et al., Genes Brain Behav. 8 (8), 753-757 (2009) 2. Clot, F., et al., Brain 132 (PT 7), 1753-1763 (2009)

Pictures:

Formalin-fixed and paraffin-embedded human hepatocarcinoma reacted with PCBD1 Antibody (Center), which was peroxidase-conjugated to the secondary antibody, followed by DAB staining. This data demonstrates the use of this antibody for immunohistochemistry; clinical relevance has not been evaluated.



Western blot analysis of PCBD1 Antibody (Center) (Cat. #AP53190PU-N) in mouse liver tissue lysates (35µg/lane). PCBD1 (arrow) was detected using the purified Pab.



PCBD1 Antibody (Center) (Cat. #AP53190PU-N) flow cytometric analysis of HepG2 cells (right histogram) compared to a negative control cell (left histogram). FITC-conjugated goat-anti-rabbit secondary antibodies were used for the analysis.

HepG2

