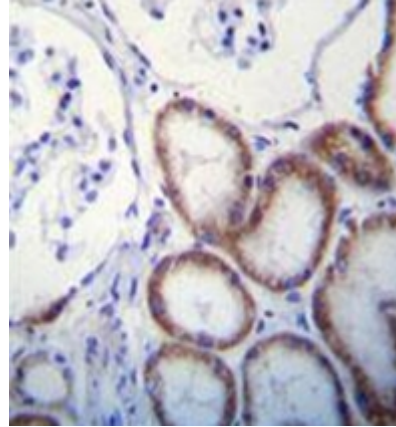


## Polyclonal Antibody to PARP4 (C-term) - Aff - Purified

<b>Alternate names:</b>	Parp4
<b>Catalog No.:</b>	AP53166PU-N
<b>Quantity:</b>	0.4 ml
<b>Concentration:</b>	lot specific
<b>Background:</b>	Component of the vault ribonucleoprotein particle which is at least composed of MVP, PARP4 and one or more vault RNAs (vRNAs). Binds to MVP. Associates with TEP1. Widely expressed; the highest levels are in the kidney; also detected in heart, placenta, lung, liver, skeletal muscle, spleen, leukocytes and pancreas.
<b>Uniprot ID:</b>	<a href="#">Q8BW82</a>
<b>NCBI:</b>	<a href="#">10090</a>
<b>Host / Isotype:</b>	Rabbit / Ig
<b>Immunogen:</b>	KLH conjugated synthetic peptide selected from the C-terminal region of human PARP4
<b>Format:</b>	<b>State:</b> Liquid purified Ig fraction <b>Purification:</b> Protein A column, followed by peptide affinity purification <b>Buffer System:</b> PBS containing 0.09% (W/V) Sodium Azide as preservative
<b>Applications:</b>	<b>ELISA:</b> 1/1000. <b>Western Blot:</b> 1/100-1/500. <b>Immunohistochemistry on Paraffin Sections:</b> 1/10-1/50. Other applications not tested. Optimal dilutions are dependent on conditions and should be determined by the user.
<b>Specificity:</b>	This antibody recognizes Human and Mouse PARP4 (C-term).
<b>Add. Information:</b>	<b>Molecular Weight:</b> 24;344 Da
<b>Storage:</b>	Store undiluted at 2-8°C for one month or (in aliquots) at -20°C for longer. Avoid repeated freezing and thawing. Shelf life: one year from despatch.

Pictures:

Immunohistochemistry analysis in formalin fixed and paraffin embedded human kidney tissue reacted with PARP4 Antibody (C-term) Cat.-No AP53166PU-N, which was peroxidase conjugated to the secondary antibody and followed by DAB staining. This data demonstrates the u



Western blot analysis of PARP4 Antibody (C-term) Cat.-No AP53166PU-N in mouse lung tissue lysates (35ug/lane). This demonstrates the PARP4 antibody detected the PARP4 protein (arrow).

