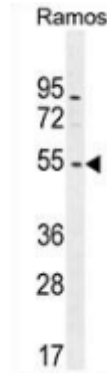


AP52878PU-N**Polyclonal Antibody to NIPAL1 (C-term) - Aff - Purified**

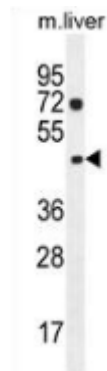
Alternate names:	Magnesium transporter NIPA3, NIPA3, NPAL1
Quantity:	0.4 ml
Concentration:	lot specific
Background:	Acts as a Mg(2+) transporter. Can also transport other divalent cations such as Fe(2+), Sr(2+), Ba(2+), Mn(2+), Cu(2+) and Co(2+) but to a much less extent than Mg(2+) (By similarity).
Uniprot ID:	Q6NVV3
NCBI:	NP_997213
GeneID:	152519
Host / Isotype:	Rabbit / Ig
Immunogen:	Synthetic peptide - KLH conjugated - corresponding to the C-terminal region (between 388-410aa) of human NIPAL1
Format:	State: Liquid purified Ig fraction Purification: Purified through a Protein A column followed by peptide affinity purification Buffer System: PBS with 0.09% (W/V) Sodium azide
Applications:	Flow cytometry: 1/10-1/50. Western blot: 1/100-1/500. Enzyme immunoassay: 1/1000. Other applications not tested. Optimal dilutions are dependent on conditions and should be determined by the user.
Specificity:	This antibody recognizes NIPAL1 at C-term.
Species Reactivity:	Tested: Human, Mouse
Add. Information:	Molecular Weight: 44638 Da
Storage:	Store undiluted at 2-8°C for one month or (in aliquots) at -20°C for longer. Avoid repeated freezing and thawing. Shelf life: one year from despatch.
General Readings:	Gerhard, D.S. et al., Genome Res. 14 (10B): 2121-2127 (2004)

Pictures:

Western blot analysis in Ramos cell line lysates (35ug/lane) using NIPAL1 antibody Cat.-No. AP52878PU-N (C-term). This demonstrates this antibody detected the NIPAL1 protein (arrow).



Western blot analysis in mouse liver tissue lysates (35ug/lane) using NIPAL1 antibody Cat.-No. AP52878PU-N (C-term). This demonstrates this antibody detected the NIPAL1 protein (arrow).



Flow cytometric analysis of Ramos cells (right histogram) compared to a negative control cell (left histogram) using NIPAL1 antibody Cat.-No. AP52878PU-N (C-term), followed by FITC-conjugated goat-anti-rabbit secondary antibodies.

