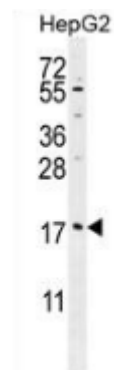


AP52745PU-N**Polyclonal Antibody to MRFAP1L1 (Center) - Aff - Purified**

Alternate names:	MORF4 family-associated protein 1-like 1
Quantity:	0.4 ml
Concentration:	0.4 mg/ml (Lot specific)
Uniprot ID:	Q96HT8
NCBI:	NP_982287
GeneID:	114932
Host / Isotype:	Rabbit / Ig
Immunogen:	Synthetic peptide - KLH conjugated - corresponding to the central region (between 28-56aa) of human MRFAP1L1.
Format:	State: Liquid purified Ig fraction Purification: Purified through a Protein A column followed by peptide affinity purification Buffer System: PBS with 0.09% (W/V) Sodium azide
Applications:	Flow cytometry: 1/10-1/50. Western blot: 1/1000. Enzyme immunoassay: 1/1000. Other applications not tested. Optimal dilutions are dependent on conditions and should be determined by the user.
Specificity:	This antibody recognizes human MRFAP1L1.
Add. Information:	Molecular Weight: 14808 Da
Storage:	Store undiluted at 2-8°C for one month or (in aliquots) at -20°C for longer. Avoid repeated freezing and thawing. Shelf life: one year from despatch.
General Readings:	Lamesch, P. et al., Genomics 89(3): 307-315 (2007)
Pictures:	Western blot analysis in HepG2 cell line lysates (35ug/lane) using MRFAP1L1 antibody Cat.-No. AP52745PU-N. This demonstrates this antibody detected the MRFAP1L1 protein (arrow).



Flow cytometric analysis of HepG2 cells (right histogram) compared to a negative control cell (left histogram) using MRFAP1L1 antibody Cat.-No. AP52745PU-N, followed by FITC-conjugated goat-anti-rabbit secondary antibodies.

