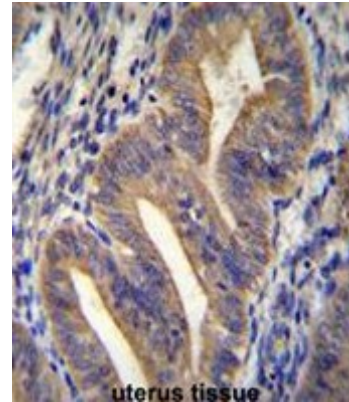


AP52673PU-N**Polyclonal Antibody to METTL10 (N-term) - Aff - Purified**

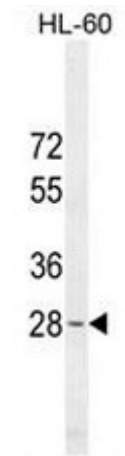
Alternate names:	C10orf138, Methyltransferase-like protein 10
Quantity:	0.4 ml
Concentration:	lot specific
Uniprot ID:	Q5IPI9
NCBI:	NP_997719
GeneID:	399818
Host / Isotype:	Rabbit / Ig
Immunogen:	KLH conjugated synthetic peptide between 36-65 amino acids from the N-terminal region of human METTL10
Format:	State: Liquid purified Ig fraction Purification: Affinity chromatography on Protein A Buffer System: PBS Preservatives: 0.09% (W/V) sodium azide
Applications:	ELISA: 1/1000. Western Blot: 1/100 - 1/500. Immunohistochemistry on paraffin sections: 1/50 - 1/100. Flow Cytometry: 1/10 - 1/50. Other applications not tested. Optimal dilutions are dependent on conditions and should be determined by the user.
Specificity:	This antibody reacts to METTL10.
Species Reactivity:	Tested: Human.
Add. Information:	Molecular Weight: 31830 Da
Storage:	Store the antibody undiluted at 2-8°C for one month or (in aliquots) at -20°C for longer. Avoid repeated freezing and thawing. Shelf life: one year from despatch.
General Readings:	Grupe, A., et al. Am. J. Hum. Genet. 78(1):78-88(2006)

Pictures:

METTL10 Antibody (N-term) (Cat. #AP52673PU-N) immunohistochemistry analysis in formalin fixed and paraffin embedded human uterus tissue followed by peroxidase conjugation of the secondary antibody and DAB staining. This data demonstrates the use of METTL10 Antibody (N-term) for immunohistochemistry. Clinical relevance has not been evaluated.



METTL10 Antibody (N-term) (Cat. #AP52673PU-N) western blot analysis in HL-60 cell line lysates (35µg/lane). This demonstrates the METTL10 antibody detected the METTL10 protein (arrow).



METTL10 Antibody (N-term) (Cat. #AP52673PU-N) flow cytometric analysis of HL-60 cells (right histogram) compared to a negative control cell (left histogram). FITC-conjugated goat-anti-rabbit secondary antibodies were used for the analysis.

