

AP52635PU-N**Polyclonal Antibody to MCHR1 / GPR24 (C-term) - Aff - Purified****Alternate names:**

G-protein coupled receptor 24, MCH receptor 1, MCH-R1, MCHR-1, Melanin-concentrating hormone receptor 1, SLC1, Somatostatin receptor-like protein

Quantity:

0.4 ml

Concentration:

0.5 mg/ml (lot specific)

Background:

The protein encoded by this gene, a member of the G protein-coupled receptor family 1, is an integral plasma membrane protein which binds melanin-concentrating hormone. The encoded protein can inhibit cAMP accumulation and stimulate intracellular calcium flux, and is probably involved in the neuronal regulation of food consumption. Although structurally similar to somatostatin receptors, this protein does not seem to bind somatostatin.

Uniprot ID:

[Q99705](#)

NCBI:

[NP_005288](#)

GeneID:

[2847](#)

Host / Isotype:

Rabbit / Ig

Immunogen:

KLH conjugated synthetic peptide between 396-422 amino acids from the C-terminal region of Human MCHR1 / GPR24

Format:

State: Liquid purified Ig fraction

Purification: Protein A column, followed by peptide affinity purification

Buffer System: PBS containing 0.09% (W/V) Sodium Azide as preservative

Applications:

Peptide ELISA: 1/1000.

Western Blot: 1/1000.

Flow Cytometry: 1/10-1/50.

Immunohistochemistry on Paraffin Sections: 1/50-1/100.

Other applications not tested. Optimal dilutions are dependent on conditions and should be determined by the user.

Specificity:

This antibody recognizes Human MCHR1 / GPR24 (C-term).

Add. Information:

Molecular Weight: 45963 Da

Storage:

Store undiluted at 2-8°C for one month or (in aliquots) at -20°C for longer.

Avoid repeated freezing and thawing.

Shelf life: one year from despatch.

General Readings:

Miyamoto-Matsubara, M., et al. Ann. N. Y. Acad. Sci. 1200, 112-119 (2010)

Yerges, L.M., et al. J. Bone Miner. Res. 24(12):2039-2049(2009)

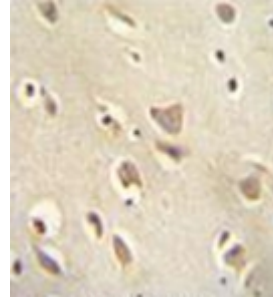
Miller, C.L., et al. Schizophr. Res. 113 (2-3), 259-267 (2009)

Gavalas, N.G., et al. Exp. Dermatol. 18(5):454-463(2009)

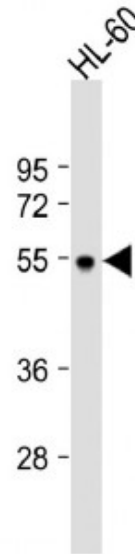
de Krom, M., et al. Biol. Psychiatry 65(7):625-630(2009)

Pictures:

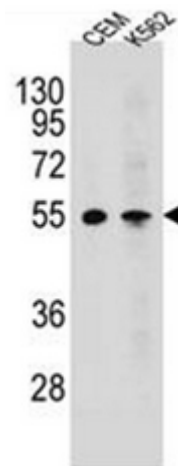
Immunohistochemistry analysis in formalin fixed and paraffin embedded human brain tissue reacted with MCHR1 / GPR24 Antibody (C-term) Cat.-No AP52635PU-N, which was peroxidase conjugated to the secondary antibody and followed by DAB staining.



Western blot analysis of MCHR1 / GPR24 Antibody (C-term) Cat.-No AP52635PU-Nat 1/1000 dilution + HL-60 whole cell lysate Lysates/proteins at 20 µg per lane. Secondary Goat Anti-Rabbit IgG, (H+L), Peroxidase conjugated at 1/10000 dilution. Predicted band size: 46 kDa Blocking/Dilution buffer: 5% NFDN/TBST.



Western blot analysis of MCHR1 / GPR24 Antibody (C-term) Cat.-No AP52635PU-N in CEM, K562 cell line lysates (35ug/lane). This demonstrates the MCHR1 antibody detected the MCHR1 protein (arrow).



Flow cytometric analysis of K562 cells using MCHR1 / GPR24 Antibody (C-term) Cat.-No AP52635PU-N (right histogram) compared to a negative control cell (left histogram). FITC-conjugated goat-anti-rabbit secondary antibodies were used for the analysis.

