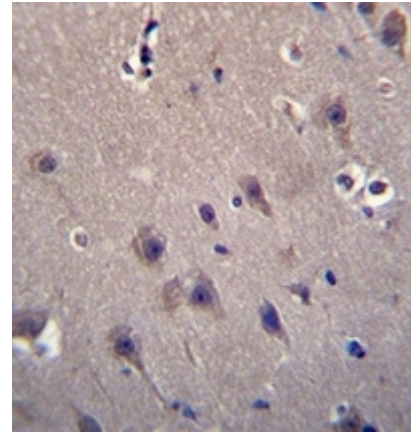


AP52634PU-N**Polyclonal Antibody to MCF2 (C-term) - Aff - Purified**

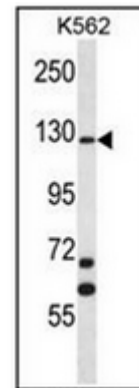
Alternate names:	DBL, Proto-oncogene DBL
Quantity:	0.4 ml
Concentration:	lot specific
Background:	The oncogenic protein encoded by this gene is a guanine nucleotide exchange factor (GEF) that exerts control over some members of the Rho family of small GTPases. Several transcript variants encoding different isoforms have been found for this gene. These isoforms exhibit different expression patterns and varying levels of GEF activity.
Uniprot ID:	P10911
NCBI:	NP_001093325
GeneID:	4168
Host / Isotype:	Rabbit / Ig
Immunogen:	KLH conjugated synthetic peptide between 803-833 amino acids from the C-terminal region of Human MCF2
Format:	State: Liquid purified Ig fraction Purification: Protein A column, followed by peptide affinity purification Buffer System: PBS containing 0.09% (W/V) Sodium Azide as preservative
Applications:	ELISA: 1/1000. Western Blot: 1/100-1/500. Flow Cytometry: 1/10-1/50. Immunohistochemistry on Paraffin Sections: 1/10-1/50. Other applications not tested. Optimal dilutions are dependent on conditions and should be determined by the user.
Specificity:	This antibody recognizes Human MCF2 (C-term).
Add. Information:	Molecular Weight: 107673 Da
Storage:	Store undiluted at 2-8°C for one month or (in aliquots) at -20°C for longer. Avoid repeated freezing and thawing. Shelf life: one year from despatch.
General Readings:	Piton, A., et al. Mol. Psychiatry (2010) In press Murakami, M., et al. Int. J. Cancer 123(3):500-510(2008) Murakami, M., et al. Cancer Biol. Ther. 7(5):677-688(2008) Rojas, R.J., et al. J. Biol. Chem. 282(40):29201-29210(2007) Prag, S., et al. Mol. Biol. Cell 18(8):2935-2948(2007)

Pictures:

Immunohistochemistry analysis in formalin fixed and paraffin embedded human brain tissue reacted with MCF2 Antibody (C-term) Cat.-No AP52634PU-N, which was peroxidase conjugated to the secondary antibody and followed by DAB staining.



Western blot analysis of MCF2 Antibody (C-term) Cat.-No AP52634PU-N in K562 cell line lysates (35ug/lane). This demonstrates the MCF2 antibody detected the MCF2 protein (arrow).



Flow cytometric analysis of K562 cells using MCF2 Antibody (C-term) Cat.-No AP52634PU-N (right histogram) compared to a negative control cell (left histogram). FITC-conjugated donkey-anti-rabbit secondary antibodies were used for the analysis.

