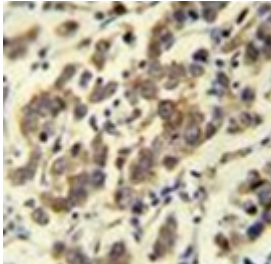
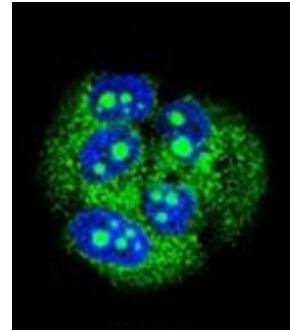


AP52620PU-N**Polyclonal Antibody to MBD3L3 (C-term) - Aff - Purified**

Alternate names:	Putative methyl-CpG-binding domain protein 3-like 3
Quantity:	0.4 ml
Concentration:	lot specific
Uniprot ID:	A6NE82
NCBI:	NP_001157897
GeneID:	653657
Host / Isotype:	Rabbit / Ig
Immunogen:	KLH conjugated synthetic peptide between 163-192 amino acids from the C-terminal region of human MBD3L3
Format:	State: Liquid purified Ig fraction Purification: Protein A column, followed by peptide affinity purification Buffer System: PBS containing 0.09% (W/V) Sodium Azide as preservative
Applications:	ELISA: 1/1000. Western Blot: 1/100-1/500. Flow Cytometry: 1/10-1/50. Immunofluorescence: 1/10-1/50. Immunohistochemistry on Paraffin Sections: 1/10-1/50. Other applications not tested. Optimal dilutions are dependent on conditions and should be determined by the user.
Specificity:	This antibody recognizes Human MBD3L3 (C-term).
Add. Information:	Molecular Weight: 23095 Da
Storage:	Store undiluted at 2-8°C for one month or (in aliquots) at -20°C for longer. Avoid repeated freezing and thawing. Shelf life: one year from despatch.
General Readings:	Grimwood, J., et al. Nature 428(6982):529-535(2004)
Pictures:	Immunohistochemistry analysis in formalin fixed and paraffin embedded human testis carcinoma reacted with MBD3L3 Antibody (C-term) Cat.-No AP52620PU-N, which was peroxidase conjugated to the secondary antibody and followed by DAB staining. 

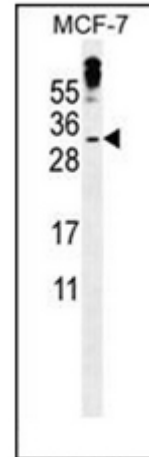
Confocal immunofluorescent analysis of MBD3L3 Antibody (C-term)

Cat.-No AP52620PU-N with MCF-7 cell followed by Alexa Fluor 488-conjugated goat anti-rabbit IgG (green). DAPI was used to stain the cell nuclear (blue).



Western blot analysis of MBD3L3

Antibody (C-term) Cat.-No AP52620PU-N in MCF-7 cell line lysates (35ug/lane). This demonstrates the MBD3L3 antibody detected the MBD3L3 protein (arrow).



Flow cytometric analysis of MCF-7 cells using MBD3L3 Antibody (C-term)

Cat.-No AP52620PU-N (right histogram) compared to a negative control cell (left histogram). FITC-conjugated goat-anti-rabbit secondary antibodies were used for the analysis.

