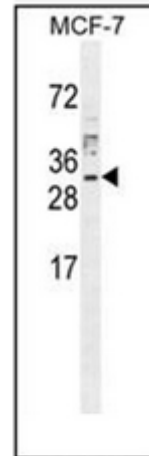


Polyclonal Antibody to MAP6D1 (C-term) - Aff - Purified

Alternate names:	MAP6 domain-containing protein 1
Catalog No.:	AP52602PU-N
Quantity:	0.1 mg
Concentration:	0.25 mg/ml
Background:	This gene encodes a protein highly similar to the mouse MAP6 domain containing 1 protein, which is related to the STOP proteins. Based on the study of the mouse protein, the encoded protein may function as a calmodulin-regulated neuronal protein that binds and stabilizes microtubules but also associates with the Golgi membranes through N-terminal palmitoylation. [provided by RefSeq].
Uniprot ID:	Q9H9H5
NCBI:	NP_079147
GeneID:	79929
Host / Isotype:	Rabbit / Ig
Immunogen:	KLH conjugated synthetic peptide between 129-159 amino acids from the C-terminal region of human MAP6D1
Format:	State: Liquid purified Ig fraction Purification: Protein A column, followed by peptide affinity purification Buffer System: PBS containing 0.09% (W/V) Sodium Azide as preservative
Applications:	ELISA: 1/1000. Western Blot: 1/100-1/500. Flow Cytometry: 1/10-1/50. Other applications not tested. Optimal dilutions are dependent on conditions and should be determined by the user.
Specificity:	This antibody recognizes Human MAP6D1 (C-term).
Add. Information:	Molecular Weight: 21005 Da
Storage:	Store undiluted at 2-8°C for one month or (in aliquots) at -20°C for longer. Avoid repeated freezing and thawing. Shelf life: one year from despatch.
General Readings:	Gory-Faure, S., et al. J. Biol. Chem. 281(38):28387-28396(2006) Gory-Faure, S., et al. J. Biol. Chem. 281(38):28387-28396(2006)

Pictures:

Western blot analysis of MAP6D1 Antibody (C-term) Cat.-No AP52602PU-N in MCF-7 cell line lysates (35ug/lane). This demonstrates the MAP6D1 antibody detected the MAP6D1 protein (arrow).



Flow cytometric analysis of MCF-7 cells using MAP6D1 Antibody (C-term) Cat.-No AP52602PU-N (right histogram) compared to a negative control cell (left histogram). FITC-conjugated goat-anti-rabbit secondary antibodies were used for the analysis.

