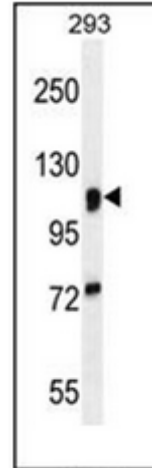


AP52593PU-N**Polyclonal Antibody to Alpha-Mannosidase 2 / MAN2A1 (Center)
- Aff - Purified**

Alternate names:	3-1, 6-alpha-mannosidase, Alpha-mannosidase II, Golgi alpha-mannosidase II, MANA2, Mannosidase 2, Mannosidase alpha class 2A member 1, Mannosyl-oligosaccharide 1
Quantity:	0.4 ml
Concentration:	lot specific
Background:	This gene encodes a protein which is a member of family 38 of the glycosyl hydrolases. The protein is located in the Golgi and catalyzes the final hydrolytic step in the asparagine-linked oligosaccharide (N-glycan) maturation pathway. Mutations in the mouse homolog of this gene have been shown to cause a systemic autoimmune disease similar to human systemic lupus erythematosus.
Uniprot ID:	Q16706
NCBI:	NP_002363
GeneID:	4124
Host / Isotype:	Rabbit / Ig
Immunogen:	KLH conjugated synthetic peptide between 456-482 amino acids from the Central region of human Alpha-Mannosidase 2 / MAN2A1
Format:	State: Liquid purified Ig fraction Purification: Protein A column, followed by peptide affinity purification Buffer System: PBS containing 0.09% (W/V) Sodium Azide as preservative
Applications:	ELISA: 1/1000. Western Blot: 1/100-1/500. Flow Cytometry: 1/10-1/50. Other applications not tested. Optimal dilutions are dependent on conditions and should be determined by the user.
Specificity:	This antibody recognizes Human Alpha-Mannosidase-2 / MAN2A1 (Center).
Add. Information:	Molecular Weight: 131141 Da
Storage:	Store undiluted at 2-8°C for one month or (in aliquots) at -20°C for longer. Avoid repeated freezing and thawing. Shelf life: one year from despatch.
General Readings:	Han, S., et al. Leuk. Res. 34(10):1271-1274(2010) Rose, J.E., et al. Mol. Med. 16 (7-8), 247-253 (2010) Zhou, J.B., et al. Med. Sci. Monit. 16 (6), BR179-BR183 (2010) Miyagawa, H., et al. Rheumatology (Oxford) 47(2):158-164(2008) Yang, Q., et al. BMC Med. Genet. 8 SUPPL 1, S12 (2007)

Pictures:

Western blot analysis of Alpha-Mannosidase 2 / MAN2A1 Antibody (Center) Cat.-No AP52593PU-N in 293 cell line lysates (35ug/lane). This demonstrates the MAN2A1 antibody detected the MAN2A1 protein (arrow).



Flow cytometric analysis of 293 cells using Alpha-Mannosidase 2 / MAN2A1 Antibody (Center) Cat.-No AP52593PU-N (right histogram) compared to a negative control cell (left histogram). FITC-conjugated goat-anti-rabbit secondary antibodies were used for the analysis.

