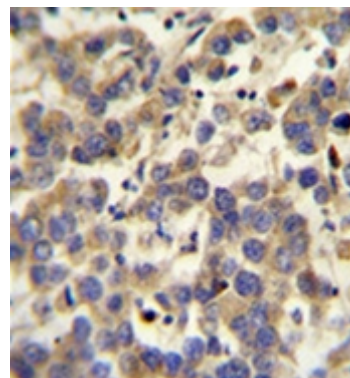


## AP52568PU-N

## Polyclonal Antibody to LYPD4 (Center) - Aff - Purified

<b>Alternate names:</b>	Ly6/PLAUR domain-containing protein 4
<b>Quantity:</b>	0.4 ml
<b>Concentration:</b>	lot specific
<b>Uniprot ID:</b>	<a href="#">Q6UWN0</a>
<b>NCBI:</b>	<a href="#">NP_775777</a>
<b>GeneID:</b>	<a href="#">147719</a>
<b>Host / Isotype:</b>	Rabbit / Ig
<b>Immunogen:</b>	KLH conjugated synthetic peptide between 111-141 amino acids from the Central region of human LYPD4
<b>Format:</b>	<b>State:</b> Liquid purified Ig fraction <b>Purification:</b> Protein A column, followed by peptide affinity purification <b>Buffer System:</b> PBS containing 0.09% (W/V) Sodium Azide as preservative
<b>Applications:</b>	<b>ELISA:</b> 1/1000. <b>Western Blot:</b> 1/100-1/500. <b>Immunohistochemistry on Paraffin Sections:</b> 1/50-1/100. Other applications not tested. Optimal dilutions are dependent on conditions and should be determined by the user.
<b>Specificity:</b>	This antibody recognizes Human and Mouse LYPD4 (Center).
<b>Add. Information:</b>	<b>Molecular Weight:</b> 26763 Da
<b>Storage:</b>	Store undiluted at 2-8°C for one month or (in aliquots) at -20°C for longer. Avoid repeated freezing and thawing. Shelf life: one year from despatch.
<b>General Readings:</b>	Clark, H.F., et al. Genome Res. 13(10):2265-2270(2003)
<b>Pictures:</b>	Immunohistochemistry analysis in formalin fixed and paraffin embedded human testis carcinoma reacted with LYPD4 Antibody (Center) Cat.-No AP52568PU-N, which was peroxidase conjugated to the secondary antibody and followed by DAB staining.



Western blot analysis of LYPD4 Antibody (Center) Cat.-No AP52568PU-N in mouse kidney tissue lysates (35ug/lane). This demonstrates the LYPD4 antibody detected the LYPD4 protein (arrow).

