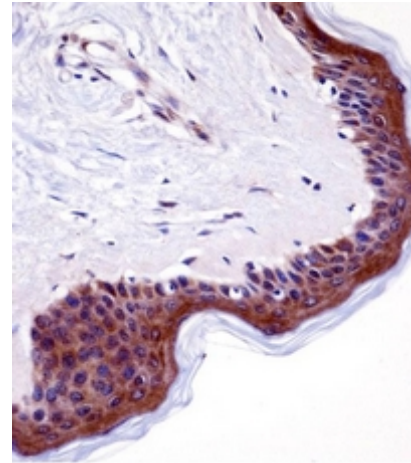


**AP52554PU-N****Polyclonal Antibody to LSM14A (C-term) - Aff - Purified**

<b>Alternate names:</b>	AlphaSNBP, C19orf13, FAM61A, Protein SCD6 homolog, Putative alpha-synuclein-binding protein, RNA-associated protein 55A, hRAP55, hRAP55A
<b>Quantity:</b>	0.4 ml
<b>Concentration:</b>	0.5 mg/ml (Lot specific)
<b>Background:</b>	Sm-like proteins were identified in a variety of organisms based on sequence homology with the Sm protein family (see SNRPD2; 601061). Sm-like proteins contain the Sm sequence motif, which consists of 2 regions separated by a linker of variable length that folds as a loop. The Sm-like proteins are thought to form a stable heteromer present in tri-snRNP particles, which are important for pre-mRNA splicing.
<b>Uniprot ID:</b>	<a href="#">Q8ND56</a>
<b>NCBI:</b>	<a href="#">NP_001107565</a>
<b>GeneID:</b>	<a href="#">26065</a>
<b>Host / Isotype:</b>	Rabbit / Ig
<b>Immunogen:</b>	KLH conjugated synthetic peptide between 311-340 amino acids from the C-terminal region of human LSM14A
<b>Format:</b>	<b>State:</b> Liquid purified Ig fraction <b>Purification:</b> Protein A column, followed by peptide affinity purification <b>Buffer System:</b> PBS containing 0.09% (W/V) Sodium Azide as preservative
<b>Applications:</b>	<b>Peptide ELISA:</b> 1/1000. <b>Western Blot:</b> 1/1000. <b>Immunohistochemistry on Paraffin Sections:</b> 1/10-1/50. Other applications not tested. Optimal dilutions are dependent on conditions and should be determined by the user.
<b>Specificity:</b>	This antibody recognizes Human LSM14A (C-term).
<b>Species Reactivity:</b>	<b>Expected from sequence similarity:</b> Bovine, Mouse.
<b>Add. Information:</b>	<b>Molecular Weight:</b> 50530 Da
<b>Storage:</b>	Store undiluted at 2-8°C for one month or (in aliquots) at -20°C for longer. Avoid repeated freezing and thawing. Shelf life: one year from despatch.
<b>General Readings:</b>	Marnef, A., et al. Int. J. Biochem. Cell Biol. 41(5):977-981(2009) Tanaka, K.J., et al. J. Biol. Chem. 281(52):40096-40106(2006) Olsen, J.V., et al. Cell 127(3):635-648(2006) Yang, W.H., et al. RNA 12(4):547-554(2006)

**Pictures:**

Immunohistochemistry analysis in formalin fixed and paraffin embedded human skin tissue reacted with LSM14A Antibody (C-term) Cat.-No AP52554PU-N, which was peroxidase conjugated to the secondary antibody and followed by DAB staining.



Western blot analysis of LSM14A Antibody (C-term) Cat.-No AP52554PU-N in A549 cell line lysates (35ug/lane). This demonstrates the LSM14A antibody detected the LSM14A protein (arrow).

