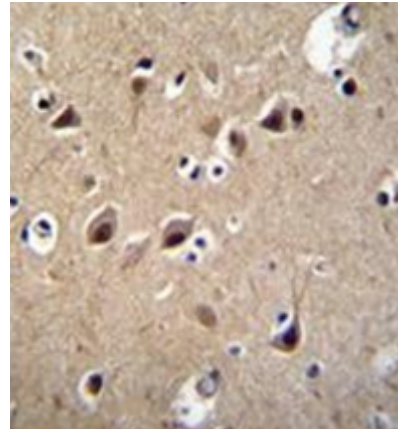


AP52551PU-N**Polyclonal Antibody to LRTM2 (C-term) - Aff - Purified**

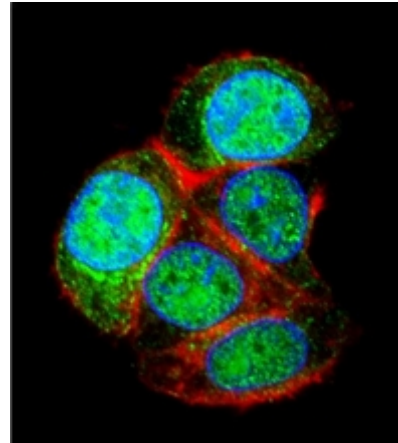
Alternate names:	Leucine-rich repeat and transmembrane domain-containing protein 2
Quantity:	0.4 ml
Concentration:	lot specific
Uniprot ID:	Q8N967
NCBI:	NP_001034118
GeneID:	654429
Host / Isotype:	Rabbit / Ig
Immunogen:	KLH conjugated synthetic peptide between 346-370 amino acids from the C-terminal region of human LRTM2
Format:	State: Liquid purified Ig fraction Purification: Protein A column, followed by peptide affinity purification Buffer System: PBS containing 0.09% (W/V) Sodium Azide as preservative
Applications:	ELISA: 1/1000. Western Blot: 1/100-1/500. Immunofluorescence: 1/10-1/50. Immunohistochemistry on Paraffin Sections: 1/50-1/100. Other applications not tested. Optimal dilutions are dependent on conditions and should be determined by the user.
Specificity:	This antibody recognizes Human LRTM2 (C-term).
Add. Information:	Molecular Weight: 41158 Da
Storage:	Store undiluted at 2-8°C for one month or (in aliquots) at -20°C for longer. Avoid repeated freezing and thawing. Shelf life: one year from despatch.
General Readings:	Kimura, K., et al. Genome Res. 16(1):55-65(2006) Ota, T., et al. Nat. Genet. 36(1):40-45(2004) Strausberg, R.L., et al. Proc. Natl. Acad. Sci. U.S.A. 99(26):16899-16903(2002)

Pictures:

Immunohistochemistry analysis in formalin fixed and paraffin embedded human brain tissue reacted with LRTM2 Antibody (C-term) Cat.-No AP52551PU-N, which was peroxidase conjugated to the secondary antibody followed by DAB staining.



Confocal immunofluorescent analysis of LRTM2 Antibody (C-term) Cat.-No AP52551PU-N with HepG2 cell followed by Alexa Fluor 488-conjugated goat anti-rabbit IgG (green). Actin filaments have been labeled with Alexa Fluor555 phalloidin (red). DAPI was used to stain the cell nuclear (blue).



Western blot analysis of LRTM2 Antibody (C-term) Cat.-No AP52551PU-N in HepG2 cell line lysates (35ug/lane). This demonstrates the LRTM2 antibody detected the LRTM2 protein (arrow).

