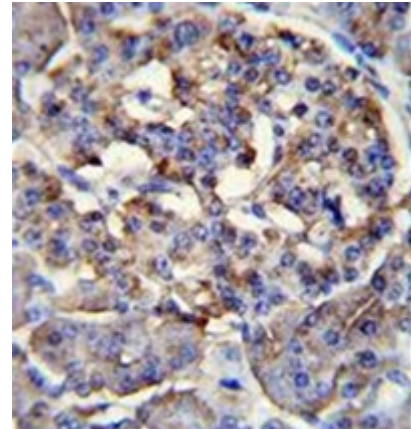


AP52546PU-N**Polyclonal Antibody to LRRC68 (N-term) - Aff - Purified**

Alternate names:	KIAA1986, Leucine-rich repeat-containing protein 68
Quantity:	0.4 ml
Concentration:	lot specific
Background:	Guanine-nucleotide-releasing protein that acts on members of the SCE4/YPT1/RAB subfamily. Stimulates GDP release from both YPT1 and RAB3A, but is less active on these proteins than on the SEC4 protein. Might play a general role in vesicular transport. Provided below are standard protocols that you may find useful for product applications.
Uniprot ID:	O75864
NCBI:	9606
GeneID:	284352
Host / Isotype:	Rabbit / Ig
Immunogen:	KLH conjugated synthetic peptide between 43-71 amino acids from the N-terminal region of human LRRC68
Format:	State: Liquid purified Ig fraction Purification: Protein A column, followed by peptide affinity purification Buffer System: PBS containing 0.09% (W/V) Sodium Azide as preservative
Applications:	ELISA: 1/1000. Western Blot: 1/100-1/500. Immunohistochemistry on Paraffin Sections: 1/50-1/100. Other applications not tested. Optimal dilutions are dependent on conditions and should be determined by the user.
Specificity:	This antibody recognizes Human and Mouse LRRC68 (N-term).
Add. Information:	Molecular Weight: 74783 Da
Storage:	Store undiluted at 2-8°C for one month or (in aliquots) at -20°C for longer. Avoid repeated freezing and thawing. Shelf life: one year from despatch.

Pictures:

Immunohistochemistry analysis in formalin fixed and paraffin embedded human pancreas tissue reacted with LRRC68 Antibody (N-term) Cat.-No AP52546PU-N, which was followed peroxidase conjugated to the secondary antibody followed by DAB staining.



Western blot analysis of LRRC68 Antibody (N-term) Cat.-No AP52546PU-N in mouse cerebellum tissue lysates (35ug/lane). This demonstrates the LRRC68 antibody detected the LRRC68 protein (arrow).

