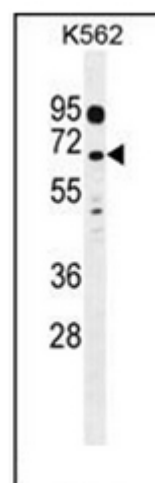


AP52544PU-N

Polyclonal Antibody to LRRC63 (C-term) - Aff - Purified

Alternate names:	Leucine-rich repeat-containing protein 63
Quantity:	0.4 ml
Concentration:	lot specific
Uniprot ID:	Q05C16
NCBI:	9606
GeneID:	220416
Host / Isotype:	Rabbit / Ig
Immunogen:	KLH conjugated synthetic peptide between 491-521 amino acids from the C-terminal region of Human LRRC63
Format:	State: Liquid purified Ig fraction Purification: Protein A column, followed by peptide affinity purification Buffer System: PBS containing 0.09% (W/V) Sodium Azide as preservative
Applications:	ELISA: 1/1000. Western Blot: 1/100-1/500. Flow Cytometry: 1/10-1/50. Other applications not tested. Optimal dilutions are dependent on conditions and should be determined by the user.
Specificity:	This antibody recognizes Human LRRC63 (C-term).
Add. Information:	Molecular Weight: 66309 Da
Storage:	Store undiluted at 2-8°C for one month or (in aliquots) at -20°C for longer. Avoid repeated freezing and thawing. Shelf life: one year from despatch.
Pictures:	Western blot analysis of LRRC63 Antibody (C-term) Cat.-No AP52544PU-N in K562 cell line lysates (35ug/lane). This demonstrates the LRRC63 antibody detected the LRRC63 protein (arrow).



Flow cytometric analysis of K562 cells using LRRC63 Antibody (C-term) Cat.-No AP52544PU-N (right histogram) compared to a negative control cell (left histogram). FITC-conjugated goat-anti-rabbit secondary antibodies were used for the analysis.

