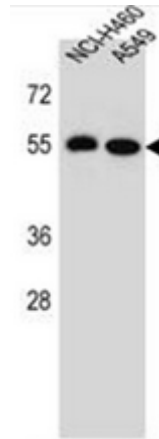


AP52543PU-N**Polyclonal Antibody to LRRC6 (Center) - Aff - Purified**

Alternate names:	LRTP, Leucine-rich repeat-containing protein 6, Leucine-rich testis-specific protein, TSLRP, Testis-specific leucine-rich repeat protein
Quantity:	0.4 ml
Concentration:	lot specific
Background:	LRRC6 may be involved in spermatocytogenesis or prophase of meiosis (By similarity).
Uniprot ID:	Q86X45
NCBI:	NP_036604
GeneID:	23639
Host / Isotype:	Rabbit / Ig
Immunogen:	KLH conjugated synthetic peptide between 186-215 amino acids from the Central region of human LRRC6
Format:	State: Liquid purified Ig fraction Purification: Protein A column, followed by peptide affinity purification Buffer System: PBS containing 0.09% (W/V) Sodium Azide as preservative
Applications:	ELISA: 1/1000. Western Blot: 1/100-1/500. Flow Cytometry: 1/10-1/50. Other applications not tested. Optimal dilutions are dependent on conditions and should be determined by the user.
Specificity:	This antibody recognizes Human LRRC6 (Center).
Add. Information:	Molecular Weight: 54255 Da
Storage:	Store undiluted at 2-8°C for one month or (in aliquots) at -20°C for longer. Avoid repeated freezing and thawing. Shelf life: one year from despatch.
General Readings:	Gerhard, D.S., et al. Genome Res. 14 (10B), 2121-2127 (2004)

Pictures:

Western blot analysis of LRRC6 Antibody (Center) Cat.-No AP52543PU-N in NCI-H460, A549 cell line lysates (35ug/lane). This demonstrates the LRRC6 antibody detected the LRRC6 protein (arrow).



Flow cytometric analysis of A549 cells using LRRC6 Antibody (Center) Cat.-No AP52543PU-N (right histogram) compared to a negative control cell (left histogram). FITC-conjugated goat-anti-rabbit secondary antibodies were used for the analysis.

