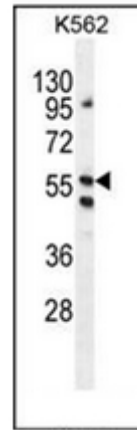


AP52524PU-N**Polyclonal Antibody to LRIT1 (C-term) - Aff - Purified**

Alternate names:	LRRC21, Leucine-rich repeat, PAL, immunoglobulin-like domain and transmembrane domain-containing protein 1
Quantity:	0.4 ml
Concentration:	lot specific
Background:	Possible role in phototransduction.
Uniprot ID:	Q9P2V4
NCBI:	NP_056428
GeneID:	26103
Host / Isotype:	Rabbit / Ig
Immunogen:	KLH conjugated synthetic peptide between 601-623 amino acids from the C-terminal region of human LRIT1
Format:	State: Liquid purified Ig fraction Purification: Protein A column, followed by peptide affinity purification Buffer System: PBS containing 0.09% (W/V) Sodium Azide as preservative
Applications:	ELISA: 1/1000. Western Blot: 1/100-1/500. Flow Cytometry: 1/10-1/50. Other applications not tested. Optimal dilutions are dependent on conditions and should be determined by the user.
Specificity:	This antibody recognizes Human LRIT1 (C-term).
Add. Information:	Molecular Weight: 68041 Da
Storage:	Store undiluted at 2-8°C for one month or (in aliquots) at -20°C for longer. Avoid repeated freezing and thawing. Shelf life: one year from despatch.
General Readings:	Davila, S., et al. Genes Immun. 11(3):232-238(2010) Olsen, J.V., et al. Cell 127(3):635-648(2006) Olsen, J.V., et al. Cell 127(3):635-648(2006) Grupe, A., et al. Am. J. Hum. Genet. 78(1):78-88(2006) Gomi, F., et al. J. Neurosci. 20(9):3206-3213(2000)

Pictures:

Western blot analysis of LRIT1 Antibody (C-term) Cat.-No AP52524PU-N in K562 cell line lysates (35ug/lane). This demonstrates the LRIT1 antibody detected the LRIT1 protein (arrow).



Flow cytometric analysis of K562 cells using LRIT1 Antibody (C-term) Cat.-No AP52524PU-N (right histogram) compared to a negative control cell (left histogram). FITC-conjugated goat-anti-rabbit secondary antibodies were used for the analysis.

