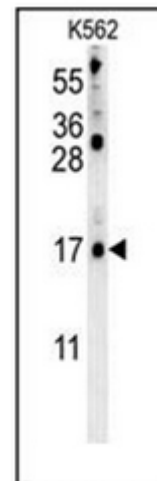


AP52452PU-N**Polyclonal Antibody to LCE2B (C-term) - Aff - Purified**

Alternate names:	LEP10, SPRL1B, XP5
Quantity:	0.4 ml
Concentration:	lot specific
Uniprot ID:	O14633
NCBI:	NP_055172
GeneID:	26239
Host / Isotype:	Rabbit / Ig
Immunogen:	KLH conjugated synthetic peptide between 68-99 amino acids from the C-terminal region of human LCE2B.
Format:	State: Liquid purified Ig fraction Purification: Protein A column, followed by peptide affinity purification Buffer System: PBS containing 0.09% (W/V) Sodium Azide as preservative
Applications:	ELISA: 1/1000. Western Blot: 1/100-1/500. Flow Cytometry: 1/10-1/50. Other applications not tested. Optimal dilutions are dependent on conditions and should be determined by the user.
Specificity:	This antibody recognizes Human LCE2B (C-term).
Add. Information:	Molecular Weight: 11219 Da
Storage:	Store undiluted at 2-8°C for one month or (in aliquots) at -20°C for longer. Avoid repeated freezing and thawing. Shelf life: one year from despatch.
Pictures:	Western blot analysis of LCE2B Antibody (C-term) Cat.-No AP52452PU-N in K562 cell line lysates (35ug/lane). This demonstrates the LCE2B antibody detected the LCE2B protein (arrow).



Flow cytometric analysis of K562 cells using LCE2B Antibody (C-term) Cat.-No AP52452PU-N (right histogram) compared to a negative control cell (left histogram). FITC-conjugated goat-anti-rabbit secondary antibodies were used for the analysis.

