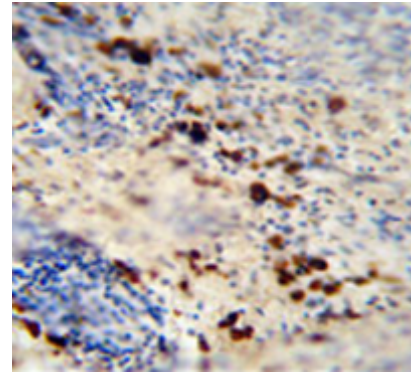


**AP52451PU-N****Polyclonal Antibody to LCE1A (C-term) - Aff - Purified**

<b>Alternate names:</b>	LEP1, Late cornified envelope protein 1A
<b>Quantity:</b>	0.4 ml
<b>Concentration:</b>	lot specific
<b>Background:</b>	LCE1A belongs to the late cornified envelope (LCE) gene cluster within the epidermal differentiation complex (EDC) on chromosome 1. The LCE cluster contains multiple conserved genes that encode stratum corneum proteins, and these genes are expressed relatively late during fetal assembly of the skin cornified envelope [Jackson <i>et al.</i> , 2005; <i>PubMed 15854049</i> ].
<b>Uniprot ID:</b>	<a href="#">Q5T7P2</a>
<b>NCBI:</b>	<a href="#">NP_848125</a>
<b>GeneID:</b>	<a href="#">353131</a>
<b>Host / Isotype:</b>	Rabbit / Ig
<b>Immunogen:</b>	Synthetic peptide - KLH conjugated - corresponding to the C-terminal region (between 57-87aa) of human LCE1A.
<b>Format:</b>	<b>State:</b> Liquid purified Ig fraction <b>Purification:</b> Purified through a Protein A column followed by peptide affinity purification <b>Buffer System:</b> PBS with 0.09% (W/V) Sodium azide
<b>Applications:</b>	<b>Immunohistochemistry on Paraffin sections:</b> 1/50-1/100. <b>Western blot:</b> 1/100-1/500. Enzyme immunoassay: 1/1000. Other applications not tested. Optimal dilutions are dependent on conditions and should be determined by the user.
<b>Specificity:</b>	This antibody recognizes LCE1A at C-term.
<b>Species Reactivity:</b>	<b>Tested:</b> Human
<b>Add. Information:</b>	<b>Molecular Weight:</b> 10982 Da
<b>Storage:</b>	Store undiluted at 2-8°C for one month or (in aliquots) at -20°C for longer. Avoid repeated freezing and thawing. Shelf life: one year from despatch.
<b>General Readings:</b>	Jackson, B., et al. <i>J. Invest. Dermatol.</i> 124(5): 1062-1070 (2005) Marshall, D., et al. <i>Proc. Natl. Acad. Sci. U.S.A.</i> 98(23): 13031-13036 (2001)

**Pictures:**

Immunohistochemistry analysis in human skin carcinoma (Formalin-fixed, Paraffin-embedded) using LCE1A antibody Cat.-No. AP52451PU-N (C-term), followed by peroxidase conjugation of the secondary antibody and DAB staining. This data demonstrates the use of the LCE1A antibody for IhC; Clinical relevance has not been evaluated.



Western blot analysis in T47D cell line lysates (35ug/lane) using LCE1A antibody Cat.-No. AP52451PU-N (C-term). This demonstrates the LCE1A antibody detected the LCE1A protein (arrow).

