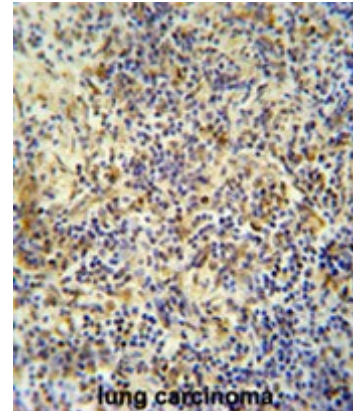


AP52409PU-N**Polyclonal Antibody to KRI1 (N-term) - Aff - Purified**

Alternate names:	Protein homolog
Quantity:	0.4 ml
Concentration:	lot specific
Background:	This gene overlaps with the gene for cysteine endopeptidase AUT-like 4 in a head-to-tail orientation. [provided by RefSeq].
Uniprot ID:	Q8N9T8
NCBI:	NP_075384
GeneID:	65095
Host / Isotype:	Rabbit / Ig
Immunogen:	immunized with a KLH conjugated synthetic peptide between 12-41 amino acids from the N-terminal region of human KRI1
Format:	State: Liquid purified Ig fraction Buffer System: Purified polyclonal antibody supplied in PBS with 0.09% (W/V) sodium azide. This antibody is purified through a protein A column; followed by peptide affinity purification.
Applications:	WB; P; E. The suggested dilution is: ELISA ~ 1:1,000 Western blotting ~ 1:100~500 Immunohistochemistry ~ 1:50~100 Other applications not tested. Optimal dilutions are dependent on conditions and should be determined by the user.
Molecular Weight:	83252 Da
Species Reactivity:	Tested: Human.
Storage:	Store the antibody undiluted at 2-8°C for one month or (in aliquots) at -20°C for longer. Avoid repeated freezing and thawing. Shelf life: one year from despatch.
General Readings:	1. Trynka, G., et al. Gut 58(8):1078-1083(2009) 2. Matsuoka, S., et al. Science 316(5828):1160-1166(2007) 3. Olsen, J.V., et al. Cell 127(3):635-648(2006) 4. Imabayashi, H., et al. Exp. Cell Res. 288(1):35-50(2003)

Pictures:

KRI1 antibody (N-term) (Cat. #AP52409PU-N) immunohistochemistry analysis in formalin fixed and paraffin embedded human lung carcinoma followed by peroxidase conjugation of the secondary antibody and DAB staining. This data demonstrates the use of the KRI1 antibody (N-term) for immunohistochemistry. Clinical relevance has not been evaluated.



KRI1 Antibody (N-term) (Cat. #AP52409PU-N) western blot analysis in HL-60 cell line lysates (35µg/lane). This demonstrates the KRI1 antibody detected the KRI1 protein (arrow).

