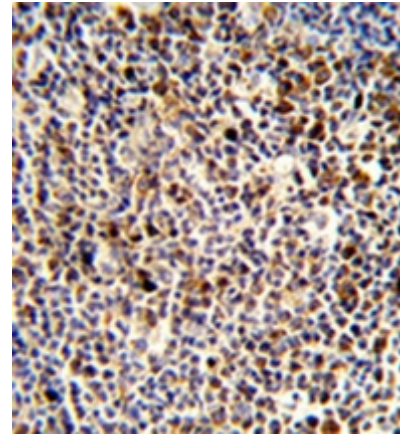


AP52374PU-N**Polyclonal Antibody to KIR3DL3 (Center) - Aff - Purified**

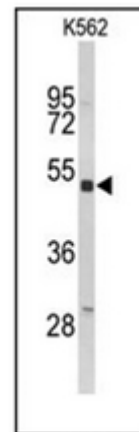
Alternate names:	CD158 antigen-like family member Z, CD158Z, CD_antigen=CD158z, Flags: Precursor, KIR3DL7, KIRC1, Killer cell immunoglobulin-like receptor 3DL3, Killer cell inhibitory receptor 1
Quantity:	0.4 ml
Concentration:	lot specific
Background:	KIR3DL3 is transmembrane glycoproteins expressed by natural killer cells and subsets of T cells. This protein are polymorphic and highly homologous and they are found in a cluster on chromosome 19q13.4 within the 1 Mb leukocyte receptor complex (LRC).
Uniprot ID:	Q8N743
NCBI:	NP_703144
GeneID:	100133046
Host / Isotype:	Rabbit / Ig
Immunogen:	KLH conjugated synthetic peptide between 138~167 amino acids from the Center region of human KIR3DL3
Format:	State: Liquid purified Ig fraction Purification: Protein A column, followed by peptide affinity purification Buffer System: PBS containing 0.09% (W/V) Sodium Azide as preservative
Applications:	ELISA: 1/1000. Western Blot: 1/100-1/500. Flow Cytometry: 1/10-1/50. Immunohistochemistry on Paraffin Sections: 1/50-1/100. Other applications not tested. Optimal dilutions are dependent on conditions and should be determined by the user.
Specificity:	This antibody recognizes Human KIR3DL3 (Center).
Add. Information:	Molecular Weight: 44928 Da
Storage:	Store undiluted at 2-8°C for one month or (in aliquots) at -20°C for longer. Avoid repeated freezing and thawing. Shelf life: one year from despatch.
General Readings:	Trompeter,H.I., et.al., J. Immunol. 174 (7), 4135-4143 (2005) Arnheim,L., et.al., Tissue Antigens 65 (3), 252-259 (2005)

Pictures:

Formalin-fixed and paraffin-embedded human tonsil reacted with KIR3DL3 Antibody (Center) Cat.-No AP52374PU-N, which was peroxidase conjugated to the secondary antibody, followed by DAB staining. This data demonstrates the use of this antibody for immunohistochemistry; clinical relevance has not been evaluated.



Western blot analysis of KIR3DL3 Antibody (Center) Cat.-No AP52374PU-N in K562 cell line lysates (35ug/lane). KIR3DL3 (arrow) was detected using the purified Pab.



Flow cytometry analysis of K562 cells using KIR3DL3 Antibody (Center) Cat.-No AP52374PU-N (bottom histogram) compared to a negative control cell (top histogram). FITC-conjugated goat-anti-rabbit secondary antibodies were used for the analysis.

