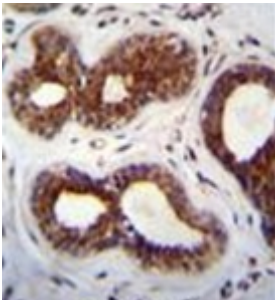
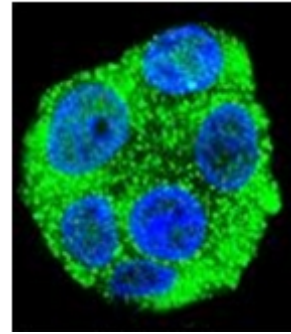


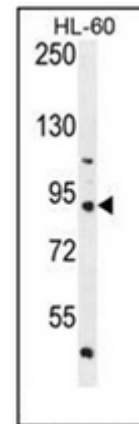
AP52354PU-N**Polyclonal Antibody to KIAA1586 (N-term) - Aff - Purified**

Quantity:	0.4 ml
Concentration:	lot specific
Uniprot ID:	Q9HCL6
NCBI:	NP_065982
GeneID:	57691
Host / Isotype:	Rabbit / Ig
Immunogen:	KLH conjugated synthetic peptide between 194-224 amino acids from the N-terminal region of human KIAA1586
Format:	State: Liquid purified Ig fraction Purification: Protein A column, followed by peptide affinity purification Buffer System: PBS containing 0.09% (W/V) Sodium Azide as preservative
Applications:	ELISA: 1/1000. Western Blot: 1/100-1/500. Flow Cytometry: 1/10-1/50. Immunofluorescence: 1/10-1/50. Immunohistochemistry on Paraffin Sections: 1/10-1/50. Other applications not tested. Optimal dilutions are dependent on conditions and should be determined by the user.
Specificity:	This antibody recognizes Human and Mouse KIAA1586 (N-term).
Add. Information:	Molecular Weight: 89673 Da
Storage:	Store undiluted at 2-8°C for one month or (in aliquots) at -20°C for longer. Avoid repeated freezing and thawing. Shelf life: one year from despatch.
Pictures:	Immunohistochemistry analysis in formalin fixed and paraffin embedded human breast tissue recated with KIAA1586 Antibody (N-term) Cat.-No AP52354PU-N followed by peroxidase conjugation of the secondary antibody and DAB staining. 

Confocal immunofluorescent analysis of KIAA1586 Antibody (N-term) Cat.-No AP52354PU-N with HepG2 cell followed by Alexa Fluor 488-conjugated goat anti-rabbit IgG (green). DAPI was used to stain the cell nuclear (blue).



Western blot analysis of KIAA1586 Antibody (N-term) Cat.-No AP52354PU-N in HL-60 cell line lysates (35ug/lane). This demonstrates the KIAA1586 antibody detected the KIAA1586 protein (arrow).



Flow cytometric analysis of HL-60 cells using KIAA1586 Antibody (N-term) Cat.-No AP52354PU-N (right histogram) compared to a negative control cell (left histogram). FITC-conjugated goat-anti-rabbit secondary antibodies were used for the analysis.

