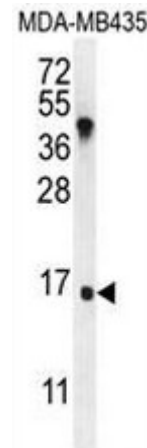


AP52172PU-N**Polyclonal Antibody to IGKV A18 (C-term) - Aff - Purified**

| | |
|----------------------------|--|
| Quantity: | 0.4 ml |
| Concentration: | lot specific |
| Uniprot ID: | A2NIV5 |
| NCBI: | 9606 |
| Host / Isotype: | Rabbit / Ig |
| Immunogen: | KLH conjugated synthetic peptide between 77-107 amino acids from the C-terminal region of human IGKV A18 |
| Format: | State: Liquid purified Ig fraction Purification: Affinity chromatography on Protein A Buffer System: PBS Preservatives: 0,09% sodium azide |
| Applications: | ELISA: 1/1000. Western blot: 1/100 -1/500. Flow Cytometry: 1/10 - 1/50. Other applications not tested. Optimal dilutions are dependent on conditions and should be determined by the user. |
| Molecular Weight: | 13;182 Da |
| Specificity: | This antibody reacts to IGKVA18. |
| Species Reactivity: | Tested: Human. |
| Storage: | Store the antibody undiluted at 2-8°C for one month or (in aliquots) at -20°C for longer. Avoid repeated freezing and thawing. Shelf life: one year from despatch. |
| Pictures: | IGKV A18 Antibody (C-term) (Cat. #AP52172PU-N) western blot analysis in MDA-MB435 cell line lysates (35µg/lane). This demonstrates the IGKVA18 antibody detected the IGKVA18 protein (arrow). |



IGKV A18 Antibody (C-term) (Cat. #AP52172PU-N) flow cytometric analysis of MDA-MB435 cells (right histogram) compared to a negative control cell (left histogram). FITC-conjugated goat-anti-rabbit secondary antibodies were used for the analysis.

