



OriGene Technologies Inc.

9620 Medical Center Drive, Ste 200
Rockville, MD 20850
UNITED STATES
Phone: +1-888-267-4436
Fax: +1-301-340-8606
techsupport@origene.com

AP52170PU-N

OriGene EU

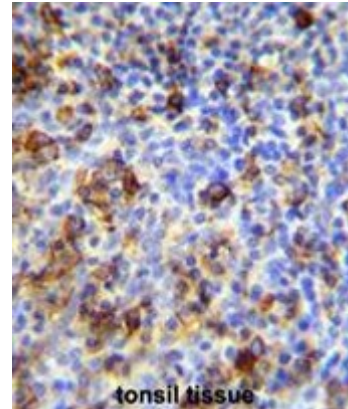
Acris Antibodies GmbH
Schillerstr. 5
32052 Herford
GERMANY
Phone: +49-5221-34606-0
Fax: +49-5221-34606-11
info@acris-antibodies.com

Polyclonal Antibody to IGHG3 (Center) - Aff - Purified

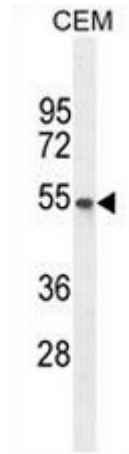
Alternate names:	Ig gamma-3 chain C region
Catalog No.:	AP52170PU-N
Quantity:	0.4 ml
Concentration:	lot specific
Uniprot ID:	CAA27268
Host / Isotype:	Rabbit / Ig
Immunogen:	KLH conjugated synthetic peptide between 255-284 amino acids from the Central region of human IGHG3
Format:	State: Liquid purified Ig fraction Purification: Affinity chromatography on Protein A Buffer System: PBS Preservatives: 0.09% (W/V) sodium azide
Applications:	ELISA: 1/1000. Western Blot: 1/100 - 1/500. Immunohistochemistry on paraffin sections: 1/50 - 1/100. Flow Cytometry: 1/10 - 1/50. Other applications not tested. Optimal dilutions are dependent on conditions and should be determined by the user.
Molecular Weight:	41287 Da
Specificity:	This antibody reacts to IGHG3.
Species Reactivity:	Tested: Human.
Storage:	Store the antibody undiluted at 2-8°C for one month or (in aliquots) at -20°C for longer. Avoid repeated freezing and thawing. Shelf life: one year from despatch.

Pictures:

IGHG3 Antibody (Center) (Cat. #AP52170PU-N) immunohistochemistry analysis in formalin fixed and paraffin embedded human tonsil tissue followed by peroxidase conjugation of the secondary antibody and DAB staining. This data demonstrates the use of IGHG3 Antibody (Center) for immunohistochemistry. Clinical relevance has not been evaluated.



IGHG3 Antibody (Center) (Cat. #AP52170PU-N) western blot analysis in CEM cell line lysates (35µg/lane). This demonstrates the IGHG3 antibody detected the IGHG3 protein (arrow).



IGHG3 Antibody (Center) (Cat. #AP52170PU-N) flow cytometric analysis of CEM cells (right histogram) compared to a negative control cell (left histogram). FITC-conjugated goat-anti-rabbit secondary antibodies were used for the analysis.

