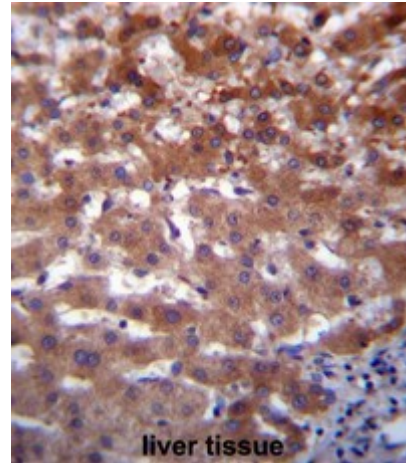


Polyclonal Antibody to IFIT1L (C-term) - Aff - Purified

Alternate names:	IFIT1B, Interferon-induced protein with tetratricopeptide repeats 1B
Catalog No.:	AP52153PU-N
Quantity:	0.1 mg
Concentration:	0.25 mg/ml
Uniprot ID:	Q5T764
NCBI:	NP_001010987
GeneID:	439996
Host / Isotype:	Rabbit / Ig
Immunogen:	KLH conjugated synthetic peptide between 376-405 amino acids from the C-terminal region of human IFIT1L
Format:	State: Liquid purified Ig fraction Purification: Affinity chromatography on Protein A Buffer System: PBS Preservatives: 0.09% (W/V) sodium azide
Applications:	ELISA: 1/1000. Western Blot: 1/100 - 1/500. Immunohistochemistry on paraffin sections: 1/10 - 1/50. Other applications not tested. Optimal dilutions are dependent on conditions and should be determined by the user.
Molecular Weight:	54993 Da
Specificity:	This antibody reacts to IFIT1L.
Species Reactivity:	Tested: Human.
Add. Information:	
Storage:	Store the antibody undiluted at 2-8°C for one month or (in aliquots) at -20°C for longer. Avoid repeated freezing and thawing. Shelf life: one year from despatch.
General Readings:	Wathelet, M.G., et al. Somat. Cell Mol. Genet. 14(5):415-426(1988)

Pictures:

IFIT1L Antibody (C-term) (Cat. #AP52153PU-N) immunohistochemistry analysis in formalin fixed and paraffin embedded human liver tissue followed by peroxidase conjugation of the secondary antibody and DAB staining. This data demonstrates the use of IFIT1L Antibody (C-term) for immunohistochemistry. Clinical relevance has not been evaluated.



IFIT1L Antibody (C-term) (Cat. #AP52153PU-N) western blot analysis in HepG2 cell line lysates (35µg/lane). This demonstrates the IFIT1L antibody detected the IFIT1L protein (arrow).

