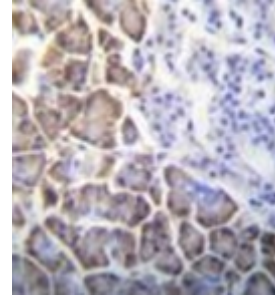


AP52144PU-N**Polyclonal Antibody to ID1 / BHLHB24 (Center) - Aff - Purified**

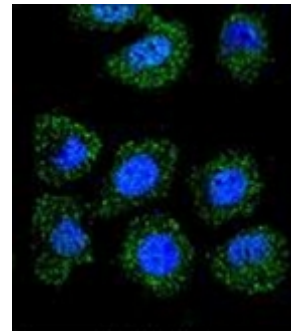
Alternate names:	Class B basic helix-loop-helix protein 24, DNA-binding protein inhibitor ID-1, Inhibitor of DNA binding 1
Quantity:	0.4 ml
Concentration:	lot specific
Background:	The protein encoded by this gene is a helix-loop-helix (HLH) protein that can form heterodimers with members of the basic HLH family of transcription factors. The encoded protein has no DNA binding activity and therefore can inhibit the DNA binding and transcriptional activation ability of basic HLH proteins with which it interacts. This protein may play a role in cell growth, senescence, and differentiation. Two transcript variants encoding different isoforms have been found for this gene. [provided by RefSeq].
Uniprot ID:	P41134
NCBI:	NP_002156
GeneID:	3397
Host / Isotype:	Rabbit / Ig
Immunogen:	KLH conjugated synthetic peptide between 73-101 amino acids from the Central region of Human ID1 / BHLHB24
Format:	State: Liquid purified Ig fraction Purification: Protein A column, followed by peptide affinity purification Buffer System: PBS containing 0.09% (W/V) Sodium Azide as preservative
Applications:	ELISA: 1/1000. Western Blot: 1/100-1/500. Flow Cytometry: 1/10-1/50. Immunofluorescence: 1/10-1/50. Immunohistochemistry on Paraffin Sections: 1/10-1/50. Other applications not tested. Optimal dilutions are dependent on conditions and should be determined by the user.
Specificity:	This antibody recognizes Human and Mouse ID1 / BHLHB24 (Center).
Add. Information:	Molecular Weight: 16133 Da
Storage:	Store undiluted at 2-8°C for one month or (in aliquots) at -20°C for longer. Avoid repeated freezing and thawing. Shelf life: one year from despatch.
General Readings:	Qian, T., et al. <i>Oncogene</i> 29(43):5818-5827(2010) Hamajima, Y., et al. <i>Cell Prolif.</i> 43(5):457-463(2010) Yang, J., et al. <i>Circ. Res.</i> 107(2):252-262(2010) Phi, J.H., et al. <i>J Neurosurg Pediatr</i> 5(6):608-614(2010) Geng, H., et al. <i>Cancer Res.</i> 70(8):3239-3248(2010)

Pictures:

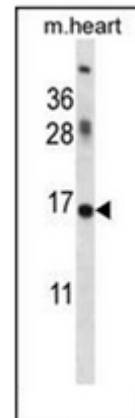
Immunohistochemistry analysis in formalin fixed and paraffin embedded human pancreas tissue reacted with ID1 / BHLHB24 Antibody (Center) Cat.-No AP52144PU-N, which was peroxidase conjugated to the secondary antibody and followed by DAB staining.



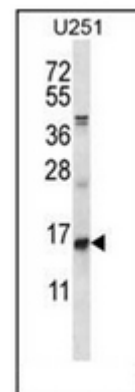
Confocal immunofluorescent analysis of ID1 / BHLHB24 Antibody (Center) Cat.-No AP52144PU-N with U-251MG cell followed by Alexa Fluor 488-conjugated goat anti-rabbit IgG (green). DAPI was used to stain the cell nuclear (blue).



Western blot analysis of ID1 / BHLHB24 Antibody (Center) Cat.-No AP52144PU-N in mouse heart tissue lysates (35ug/lane). This demonstrates the ID1(PEI 1:100) antibody detected the ID1 protein (arrow).



Western blot analysis of ID1 / BHLHB24 Antibody (Center) Cat.-No AP52144PU-N in U251 cell line lysates (35ug/lane). This demonstrates the ID1 antibody detected the ID1 protein (arrow).



Flow cytometric analysis of U251 cells using ID1 / BHLHB24 Antibody (Center) Cat.-No AP52144PU-N (right histogram) compared to a negative control cell (left histogram). FITC-conjugated goat-anti-rabbit secondary antibodies were used for the analysis.

