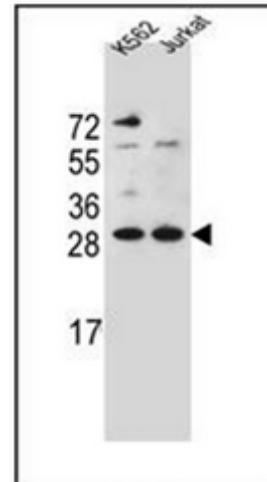


AP52058PU-N**Polyclonal Antibody to HMG1L10 (N-term) - Aff - Purified**

Alternate names:	HMG-1L10, High mobility group protein 1-like 10
Quantity:	0.4 ml
Concentration:	lot specific
Background:	HMGB1L10 binds preferentially single-stranded DNA and unwinds double stranded DNA (By similarity).
Uniprot ID:	Q9UGV6
NCBI:	XP_001720674
GeneID:	100130561
Host / Isotype:	Rabbit / Ig
Immunogen:	KLH conjugated synthetic peptide between 16-44 amino acids from the N-terminal region of human HMG1L10
Format:	State: Liquid purified Ig fraction Purification: Protein A column, followed by peptide affinity purification Buffer System: PBS containing 0.09% (W/V) Sodium Azide as preservative
Applications:	ELISA: 1/1000. Western Blot: 1/100-1/500. Flow Cytometry: 1/10-1/50. Other applications not tested. Optimal dilutions are dependent on conditions and should be determined by the user.
Specificity:	This antibody recognizes Human HMG1L10 (N-term).
Add. Information:	Molecular Weight: 24218 Da
Storage:	Store undiluted at 2-8°C for one month or (in aliquots) at -20°C for longer. Avoid repeated freezing and thawing. Shelf life: one year from despatch.

Pictures:

Western blot analysis of HMG1L10 Antibody (N-term) Cat.-No AP52058PU-N in K562, Jurkat cell line lysates (35ug/lane). This demonstrates the HMG1L10 antibody detected the HMG1L10 protein (arrow).



Flow cytometric analysis of K562 cells using HMG1L10 Antibody (N-term) Cat.-No AP52058PU-N (right histogram) compared to a negative control cell (left histogram). FITC-conjugated goat-anti-rabbit secondary antibodies were used for the analysis.

