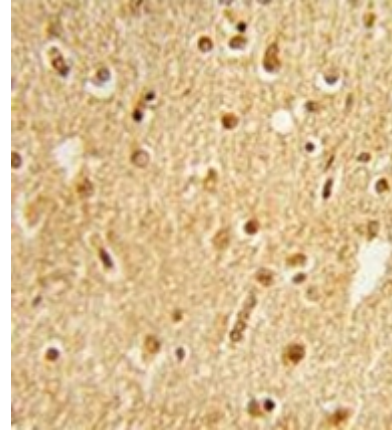


Polyclonal Antibody to HEATR7B2 (Center) - Aff - Purified

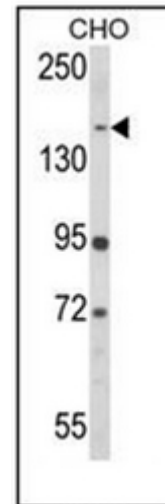
Catalog No.:	AP52026PU-N
Quantity:	0.1 mg
Concentration:	0.25 mg/ml
Uniprot ID:	Q7Z745
NCBI:	NP_775760
GeneID:	133558
Host / Isotype:	Rabbit / Ig
Immunogen:	KLH conjugated synthetic peptide between 332~361 amino acids from the Center region of human HEATR7B2
Format:	State: Liquid purified Ig fraction Purification: Protein A column, followed by peptide affinity purification Buffer System: PBS containing 0.09% (W/V) Sodium Azide as preservative
Applications:	ELISA: 1/1000. Western Blot: 1/100-1/500. Flow Cytometry: 1/10-1/50. Immunohistochemistry on Paraffin Sections: 1/50-1/100. Other applications not tested. Optimal dilutions are dependent on conditions and should be determined by the user.
Specificity:	This antibody recognizes Human HEATR7B2 (Center).
Add. Information:	Molecular Weight: 180650 Da
Storage:	Store undiluted at 2-8°C for one month or (in aliquots) at -20°C for longer. Avoid repeated freezing and thawing. Shelf life: one year from despatch.
General Readings:	Kallio,S.P., et.al., Hum. Mol. Genet. 18 (9), 1670-1683 (2009)

Pictures:

Immunohistochemistry in formalin-fixed and paraffin-embedded human brain tissue reacted with HEATR7B2 Antibody (Center) Cat.-No AP52026PU-N, which was peroxidase-conjugated to the secondary antibody, followed by DAB staining.



Western blot analysis of HEATR7B2 Antibody (Center) Cat.-No AP52026PU-N in CHO cell line lysates (35ug/lane). HEATR7B2 (arrow) was detected using the purified Pab.



Flow cytometric analysis of 293 cells using HEATR7B2 Antibody (Center) Cat.-No AP52026PU-N (bottom histogram) compared to a negative control cell (top histogram). FITC-conjugated goat-anti-rabbit secondary antibodies were used for the analysis.

