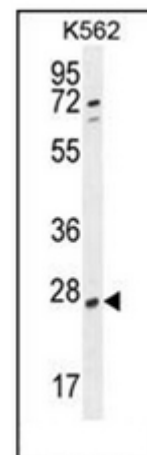
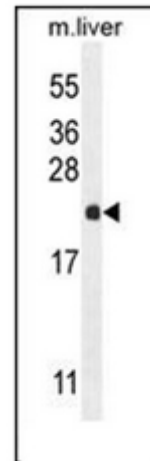


AP52019PU-N**Polyclonal Antibody to hCG_2024410 (C-term) - Aff - Purified**

Alternate names:	CG_2024410
Quantity:	0.4 ml
Concentration:	lot specific
Uniprot ID:	Q2QD12
NCBI:	NP_001137381
GeneID:	729020
Host / Isotype:	Rabbit / Ig
Immunogen:	KLH conjugated synthetic peptide between 187-215 amino acids from the C-terminal region of human hCG_2024410
Format:	State: Liquid purified Ig fraction Purification: Protein A column, followed by peptide affinity purification Buffer System: PBS containing 0.09% (W/V) Sodium Azide as preservative
Applications:	ELISA: 1/1000. Western Blot: 1/100-1/500. Flow Cytometry: 1/10-1/50. Other applications not tested. Optimal dilutions are dependent on conditions and should be determined by the user.
Specificity:	This antibody recognizes Human and Mouse hCG_2024410 (C-term).
Add. Information:	Molecular Weight: 25;023 Da
Storage:	Store undiluted at 2-8°C for one month or (in aliquots) at -20°C for longer. Avoid repeated freezing and thawing. Shelf life: one year from despatch.
General Readings:	Marques, A.C., et al. PLoS Biol. 3 (11), E357 (2005) Venter, J.C., et al. Science 291(5507):1304-1351(2001)
Pictures:	Western blot analysis of hCG_2024410 Antibody (C-term) Cat.-No AP52019PU-N in K562 cell line lysates (35ug/lane). This demonstrates the hCG_2024410 antibody detected the hCG_2024410 protein (arrow).



Western blot analysis of hCG_2024410 Antibody (C-term) Cat.-No AP52019PU-N in mouse liver tissue lysates (35ug/lane). This demonstrates the CG antibody detected the CG protein (arrow).



Flow cytometric analysis of K562 cells using hCG_2024410 Antibody (C-term) Cat.-No AP52019PU-N (right histogram) compared to a negative control cell (left histogram). FITC-conjugated goat-anti-rabbit secondary antibodies were used for the analysis.

K562

